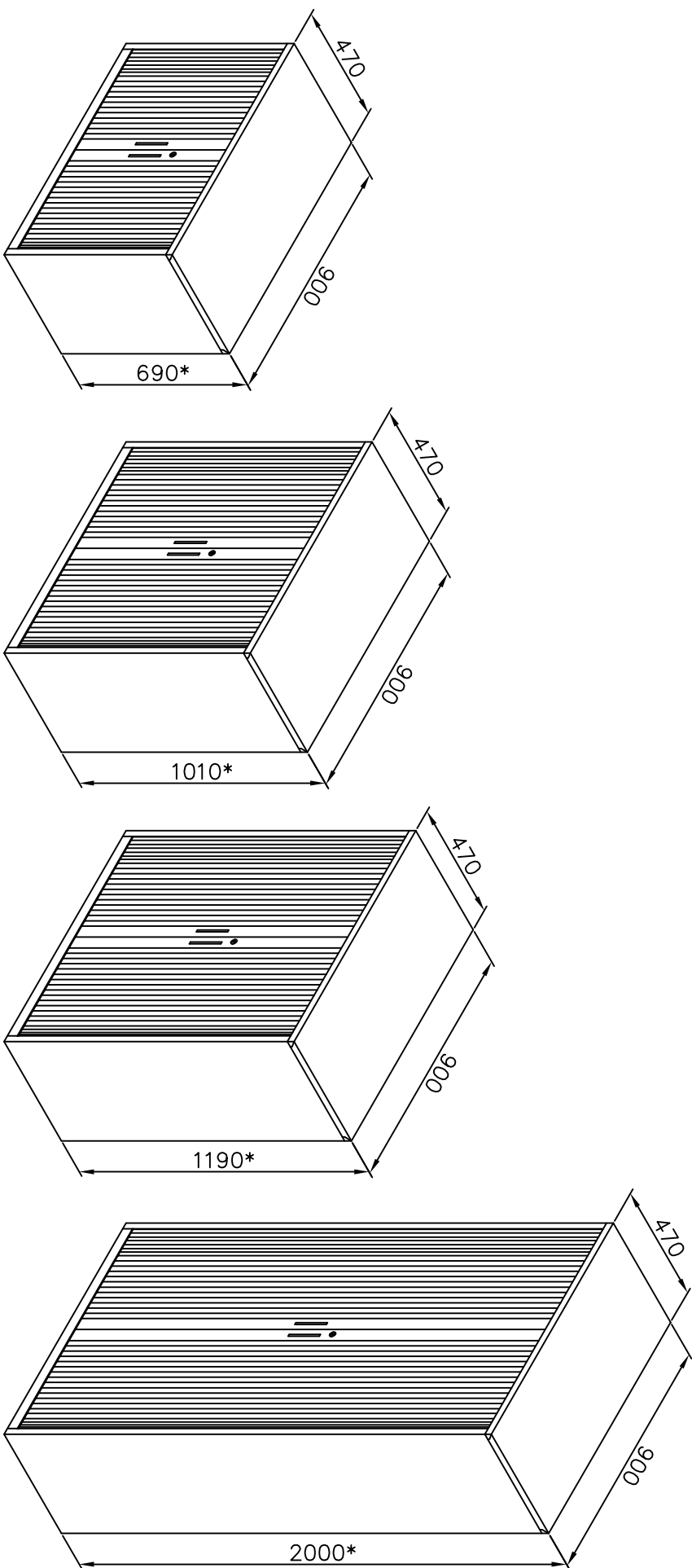


ASSEMBLY INSTRUCTIONS FOR TAMBOUR DOOR CUPBOARDS (900W)


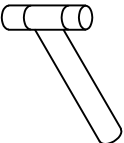
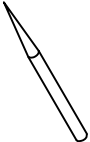

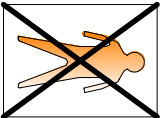
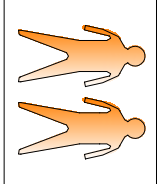
* PLEASE STUDY THE ASSEMBLY INSTRUCTION CAREFULLY & FAMILIARISE YOURSELF WITH THE PARTS BEFORE ASSEMBLY.
 ** TOOLS REQUIRED : WORK AREA AT TABLE TOP HEIGHT LEVEL & AS SHOWN ON BOTTOM SIDE.
 *** ENSURE THAT ALL THE ITEMS LISTED IN PART LIST ARE PRESENT BEFORE ASSEMBLY.



ISOMETRIC VIEW OF ASSEMBLY

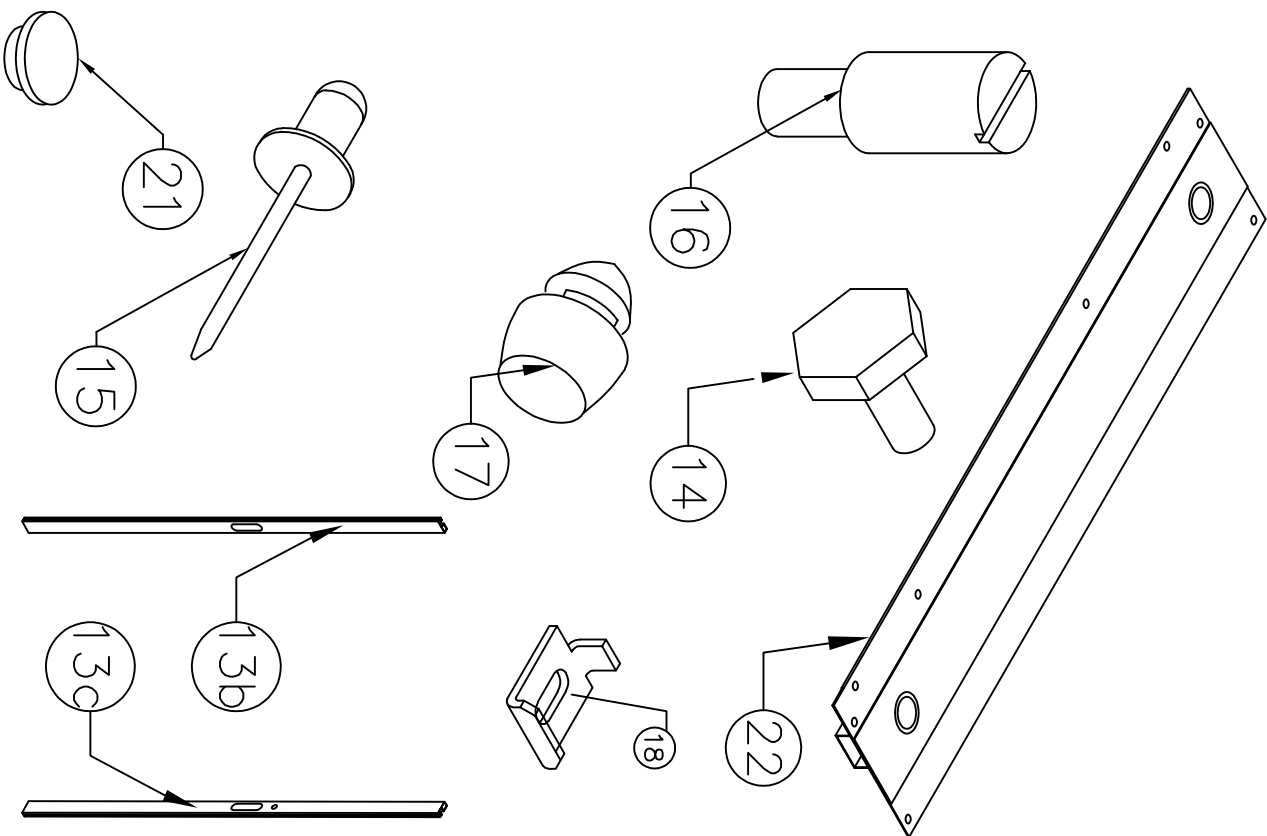
NOTE : * HEIGHTS MENTIONED ARE WITHOUT 10 mm LEVELLERS

TOOLS REQUIRED

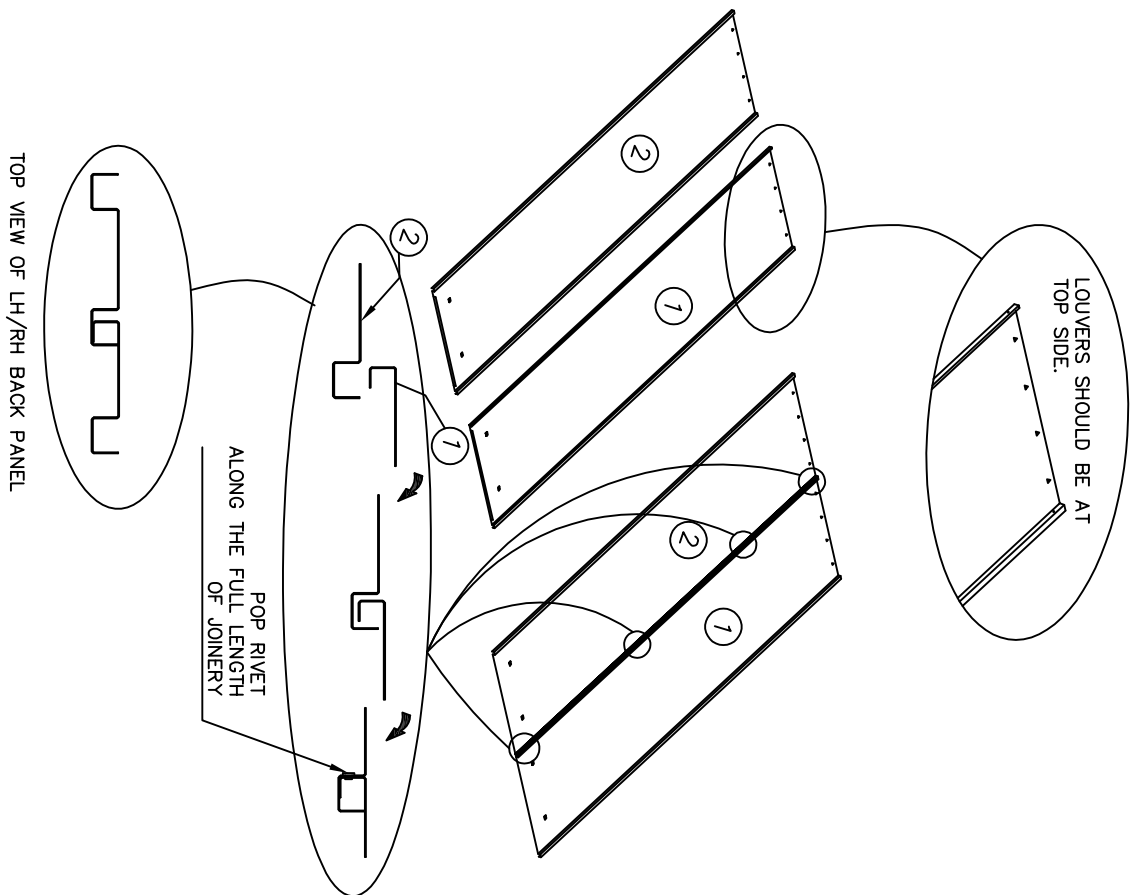
 <p>SCREW DRIVER</p>	 <p>SOFT HAMMER</p>	 <p>POKER</p>	 <p>POP RIVET GUN</p>		
<p>PAGE: 1 OF 10</p>					

PART LIST

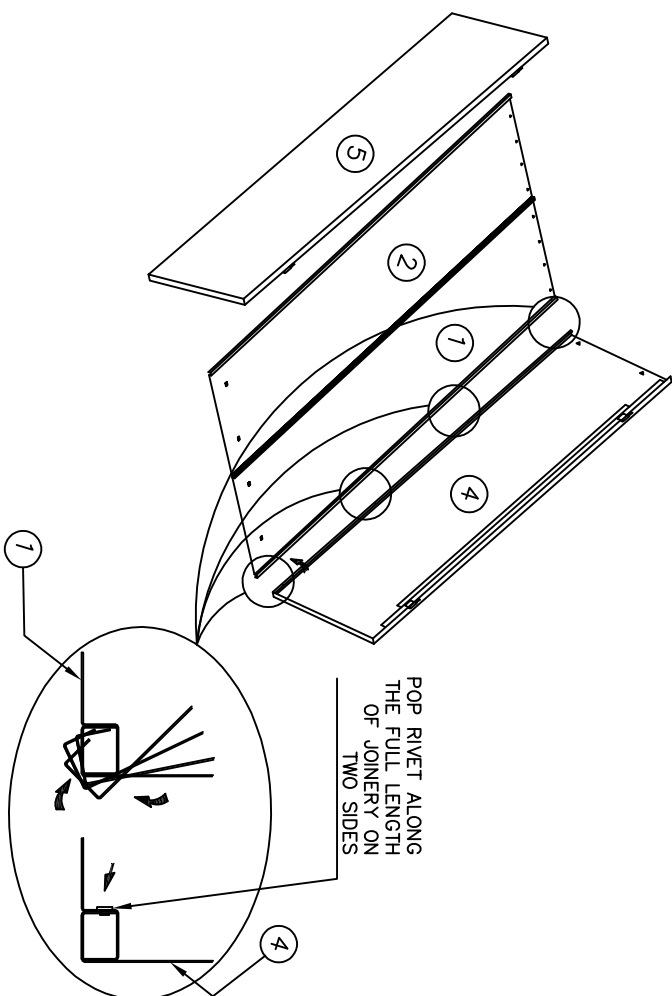
PART NO.	DESCRIPTION	QTY.
PARTS IN KD CARTONS		
1	R.H. BACK PANEL	1
2	L.H. BACK PANEL	1
3	TOP PANEL	1
4	R.H. SIDE PANEL	1
5	L.H. SIDE PANEL	1
6	TOP 'C' FRAME	1
7	BOTTOM 'C' FRAME	1
8	TRACK BKT BOTTOM	2
9	BOTTOM SHELF	1
10	L.H FALSE PANEL	1
11	R.H. FALSE PANEL	1
12	TRACK LH & RH	2+2
13d	TAMBOUR SLATS	1+1
13b	ASSBLY OF DOOR CHANNEL LH	1
13c	ASSBLY OF DOOR CHANNEL RH	1
22	LEVELER FIXING BRACKET	2
23	PLAIN SHELF (690/1010/1169/2000H)	1/2/2/4
PARTS IN PLASTIC BAG INSIDE KD CARTON		
14	ADJUSTABLE LEVELLER	4
15	POP-RIVET (5/32" DIAx1/2"L) (690/1010/1169/2000H)	46/52/52/52
16	DOOR STOPPER SCREW	2
17	GROMMET BANGER	4
18	SHELF SUPPORT	4/SHELF
19	RD HD M/C SCREW 3/16 BSW x 3/8"L WITH 3/16 BSW HEX NUT	4/SHELF
20	RD HD COMBI INT WASHER-M4X10L	12
21	CAP FOR 15DIA HOLE	4



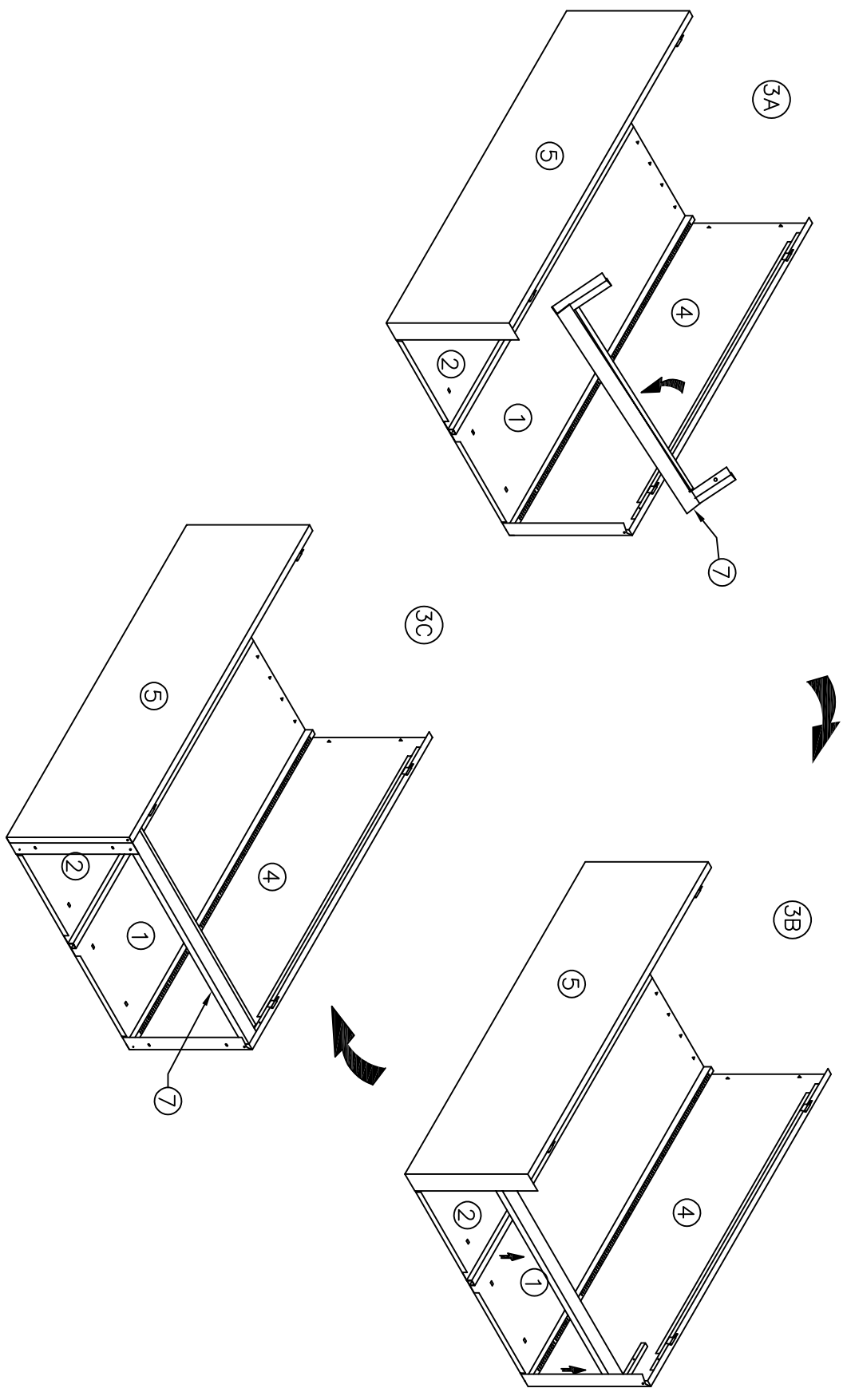
STEP : 1 BACK LH & RH ASSEMBLY

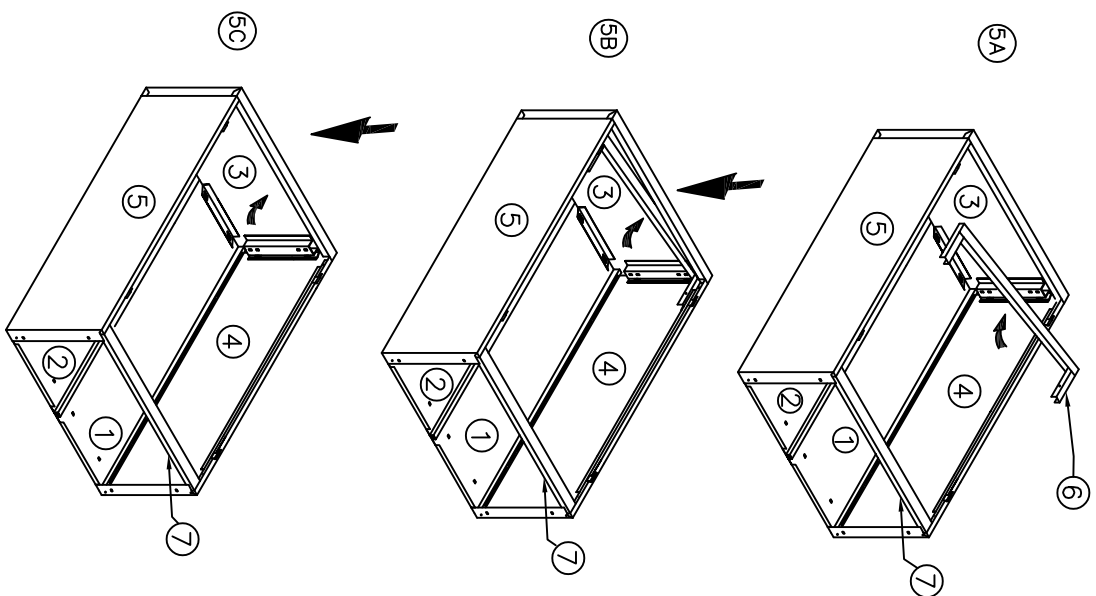
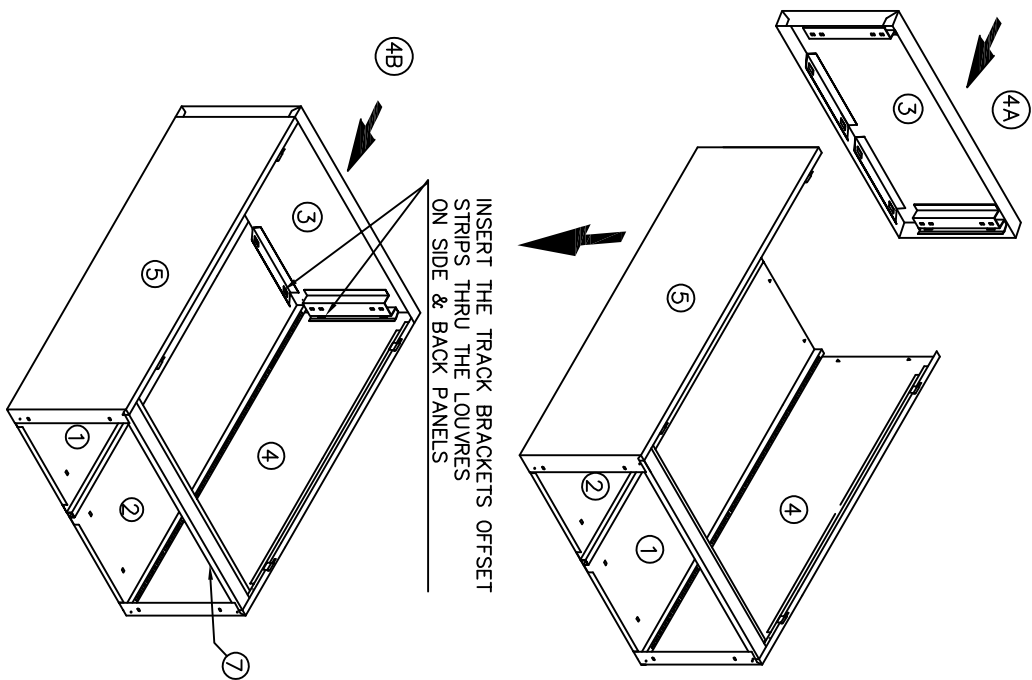


STEP : 2 - SIDE LH&RH AND BACK LH & RH ASSEMBLY

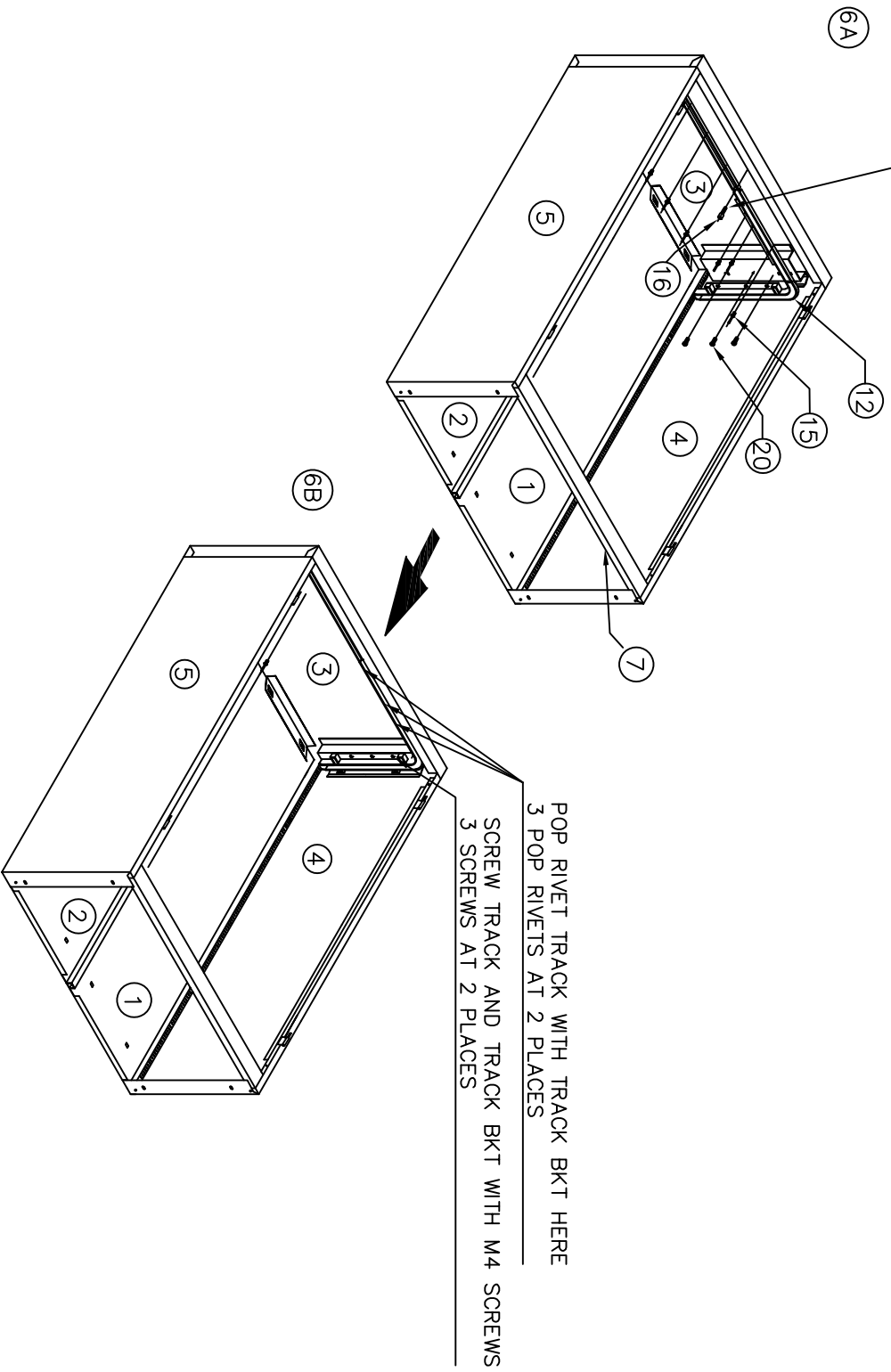


STEP : 3- FIXING OF BOTTOM STIFFENER ASSEMBLY

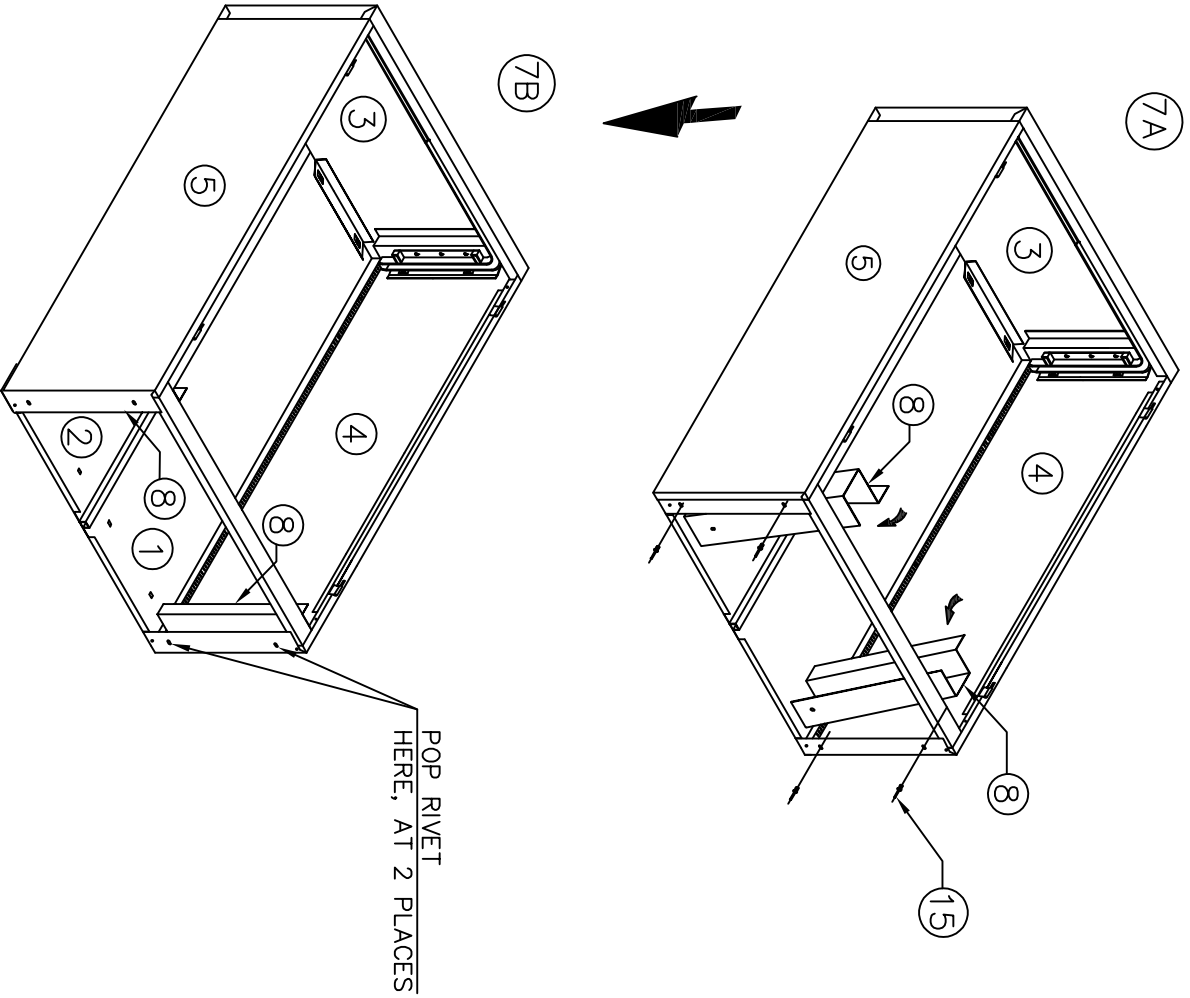




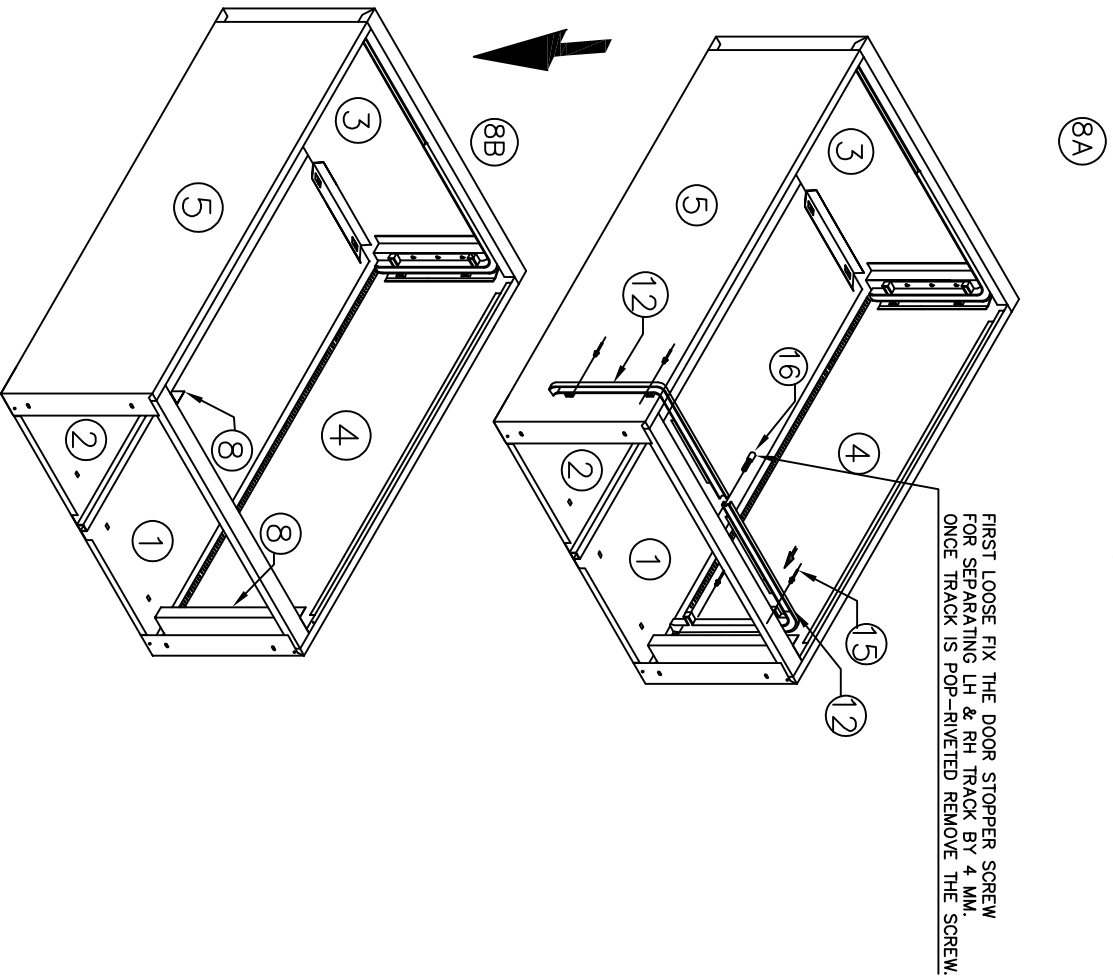
FIRST LOOSE FIX THE DOOR STOPPER SCREW FOR SEPARATING LH & RH TRACK BY 4 MM. ONCE TRACK IS POP-RIVETED REMOVE THE SCREW.

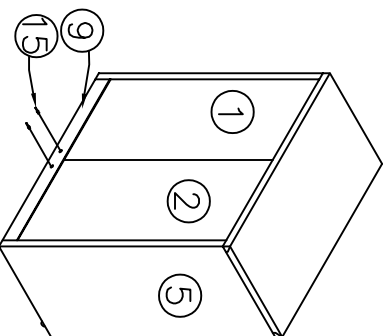
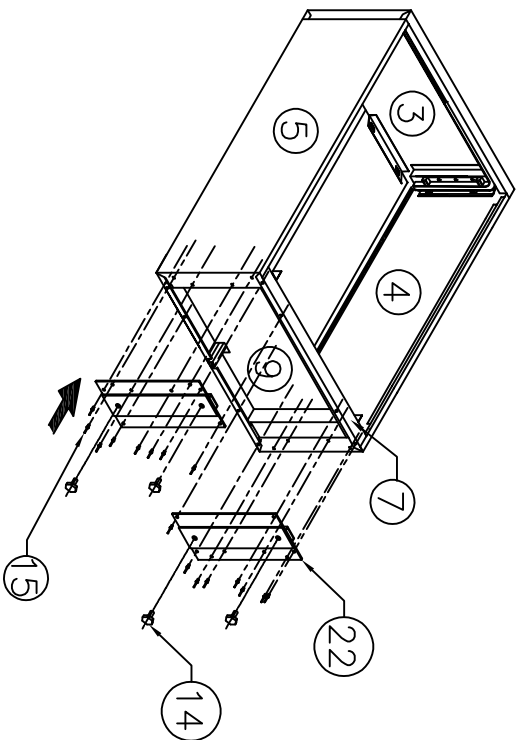
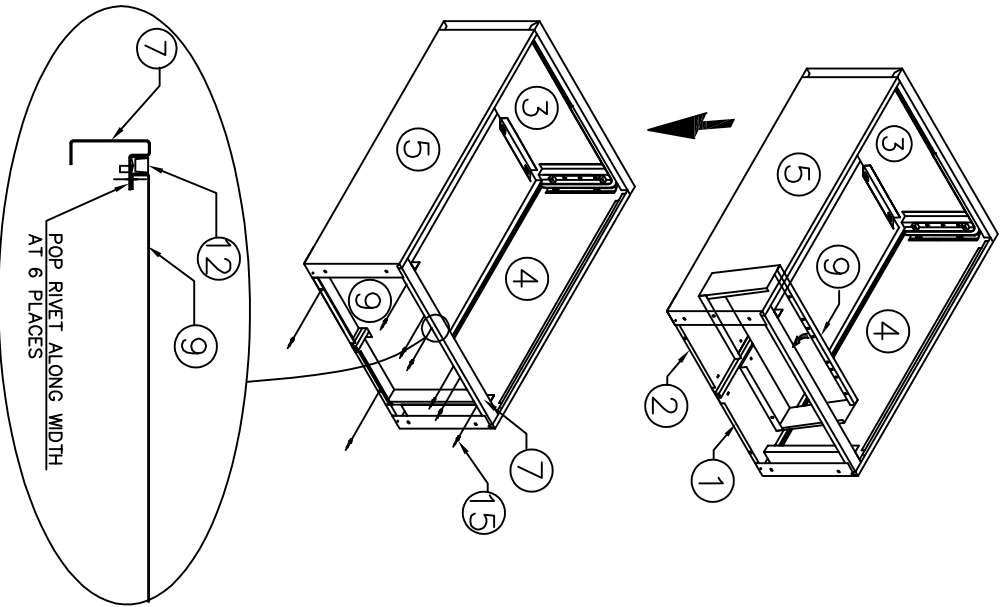


STEP : 7 – FIXING OF BOTTOM TRACK BKT

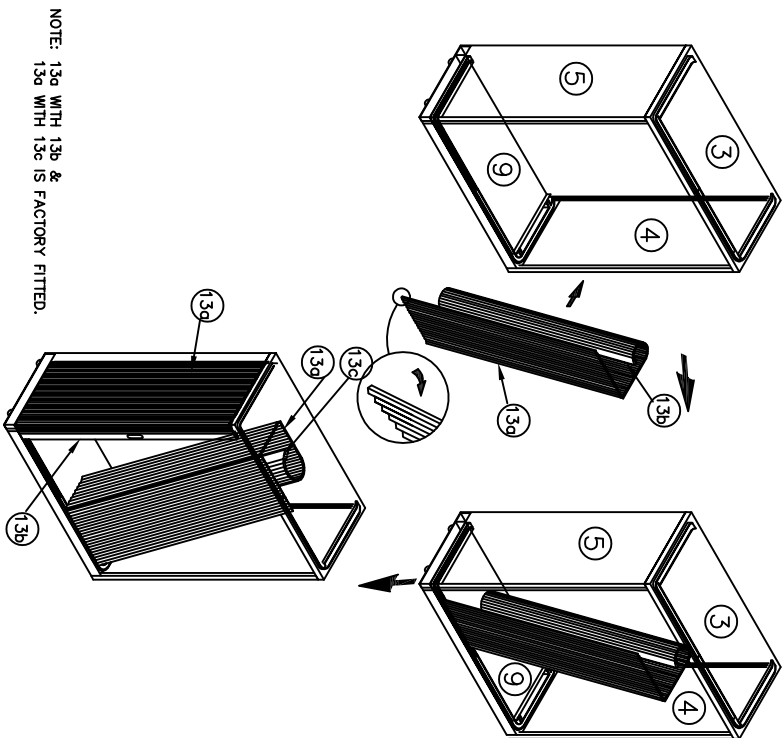


STEP : 8 – FIXING OF TRACK on BOTTOM BKT

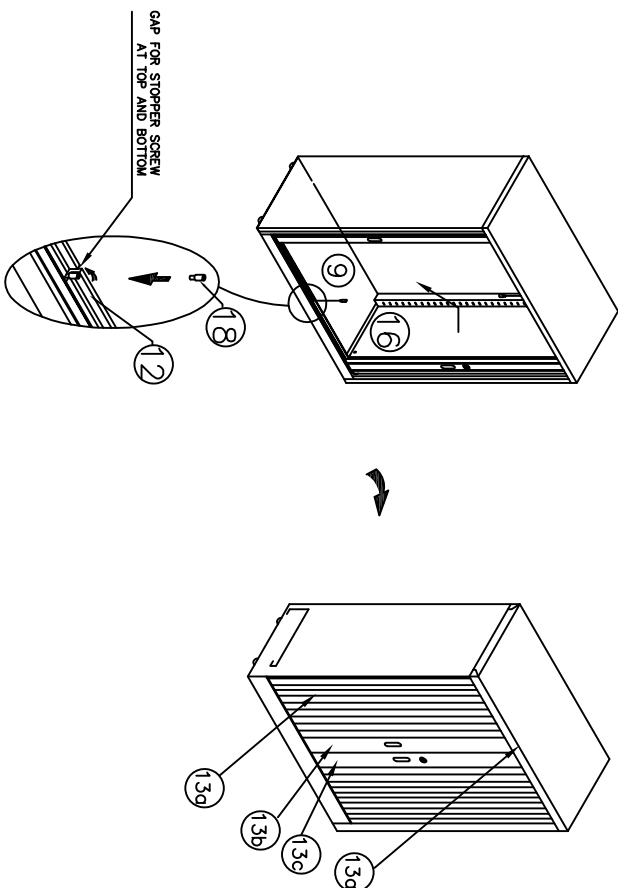




STEP : 12 – SHUTTER ASSY.



STEP : 14 – STOPPER SCREW FIXING



STEP : 13 – SHUTTER ASSY.

