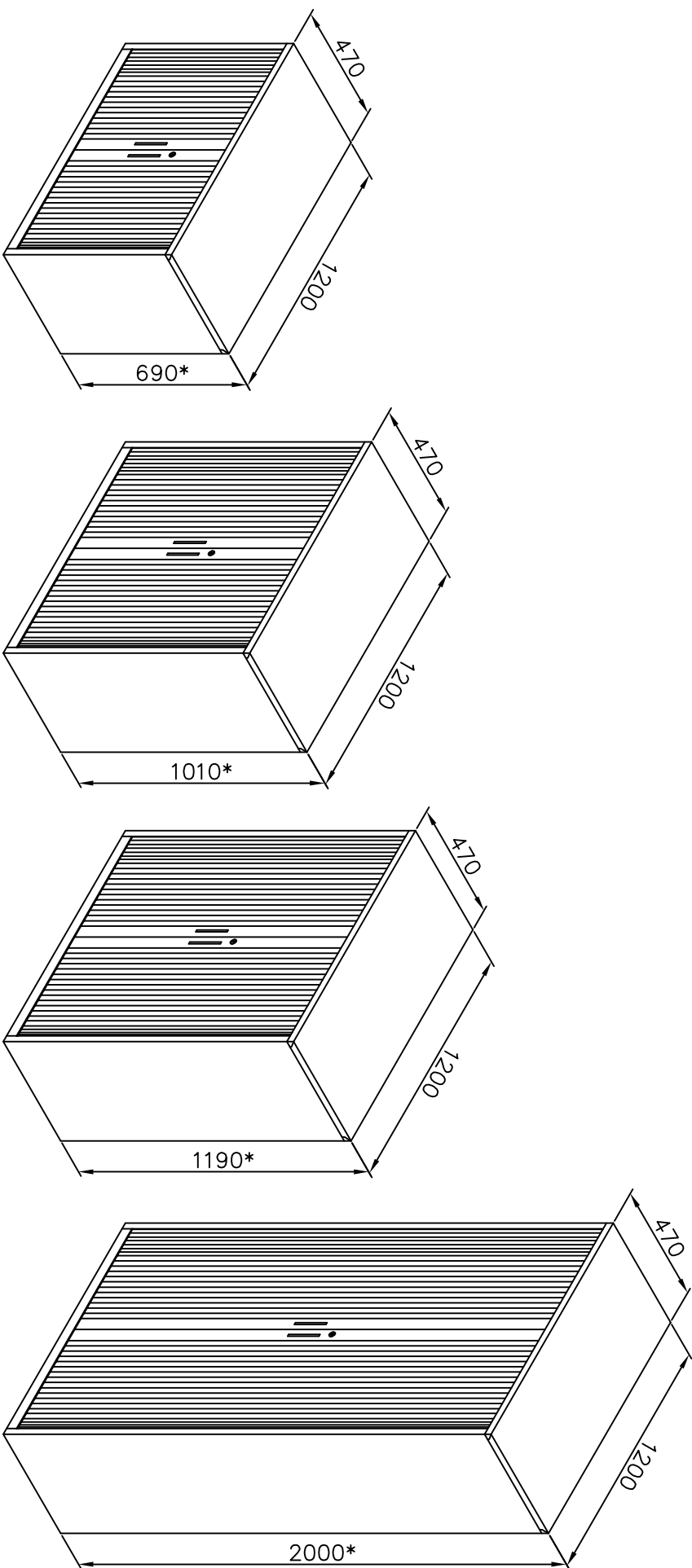


ASSEMBLY INSTRUCTIONS FOR TAMBOUR DOOR CUPBOARDS (1200W)


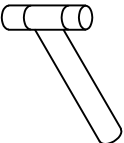
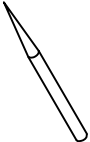

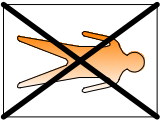
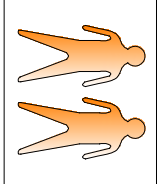
- * PLEASE STUDY THE ASSEMBLY INSTRUCTION CAREFULLY & FAMILIARISE YOURSELF WITH THE PARTS BEFORE ASSEMBLY.
- * TOOLS REQUIRED : WORK AREA AT TABLE TOP HEIGHT LEVEL & AS SHOWN ON BOTTOM SIDE.
- * ENSURE THAT ALL THE ITEMS LISTED IN PART LIST ARE PRESENT BEFORE ASSEMBLY.



ISOMETRIC VIEW OF ASSEMBLY

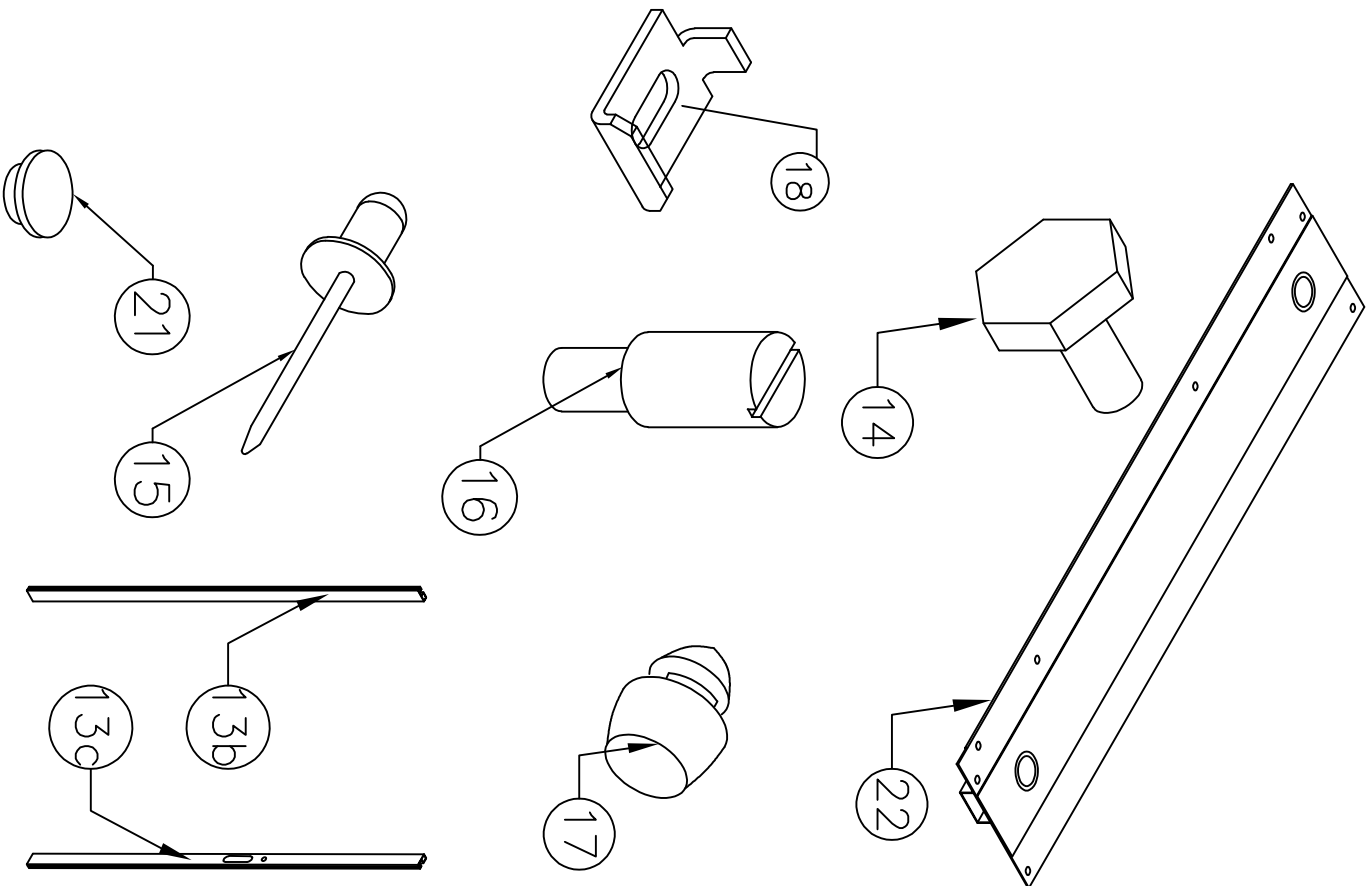
NOTE : * HEIGHTS MENTIONED ARE WITHOUT 10 mm LEVELLERS

TOOLS REQUIRED

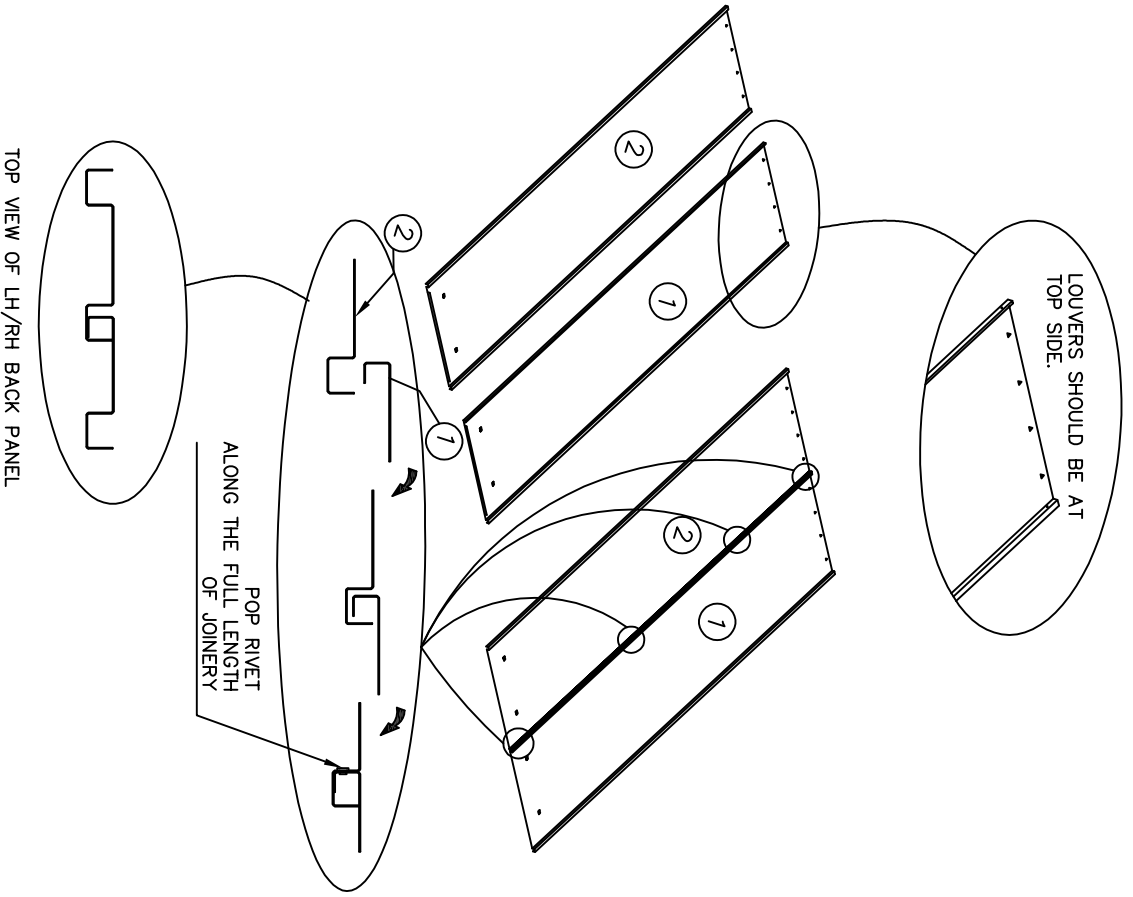
 <p>SCREW DRIVER</p>	 <p>SOFT HAMMER</p>	 <p>POKER</p>	 <p>POP RIVET GUN</p>		
<p>PAGE: 1 OF 10</p>					

PART LIST

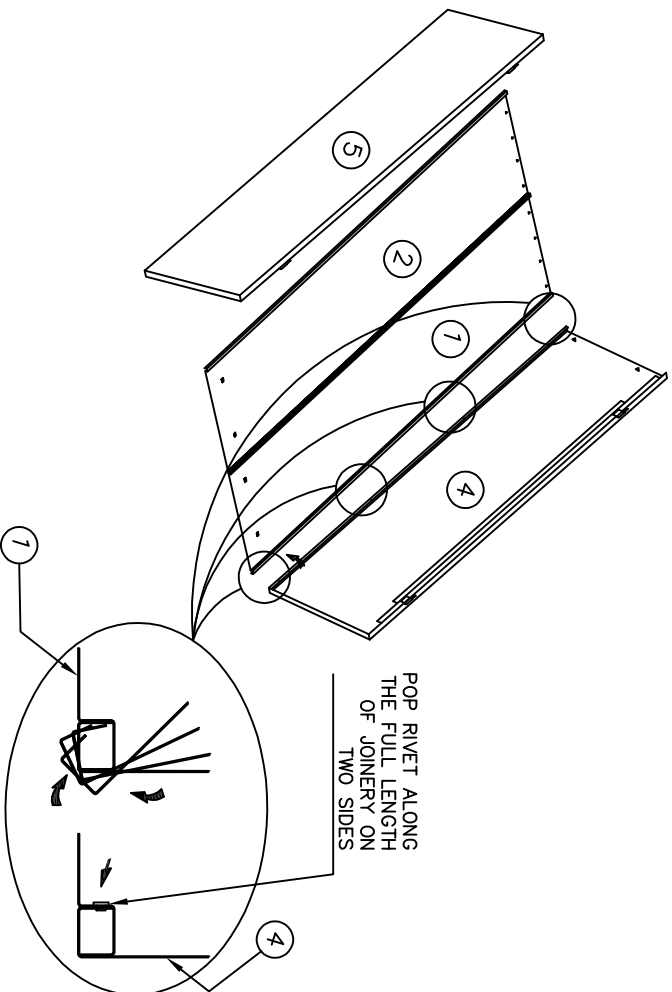
PART NO.	DESCRIPTION	QTY.
PARTS IN KD CARTON		
1	R.H. BACK PANEL	1
2	L.H. BACK PANEL	1
3	TOP PANEL	1
4	R.H. SIDE PANEL	1
5	L.H. SIDE PANEL	1
6	TOP 'C' FRAME	1
7	BOTTOM 'C' FRAME	1
8	TRACK BKT BOTTOM	2
9	BOTTOM SHELF	1
10	L.H FALSE PANEL	1
11	R.H. FALSE PANEL	1
12	TRACK LH & RH	2+2
13a	TAMBOUR SLATS	1+1
13b	ASSBLY OF DOOR CHANNEL LH	1
13c	ASSBLY OF DOOR CHANNEL RH	1
22	LEVELER FIXING BRACKET	2
23	PLAIN SHELF (690/1010/1169/2000H)	1/2/2/4
24	REAR COVER BRACKET FOR FALSE SIDE PANEL	2
PARTS IN PLASTIC BAG INSIDE KD CARTON		
14	ADJUSTABLE LEVELER	4
15	POP-RIVET (5/32" DIAx1/2"L) (690/1010/1169/2000H)	97/101/101/110
16	DOOR STOPPER SCREW	2
17	GROMMET BANGER	4
18	SHELF SUPPORT	4/SHELF
19	RD HD M/C SCREW 3/16 BSW x 3/8"L WITH 3/16 BSW HEX NUT	4/SHELF
20	RD HD COMBI INT WASHER-M4X10L	12
21	CAP FOR 15DIA HOLE	4



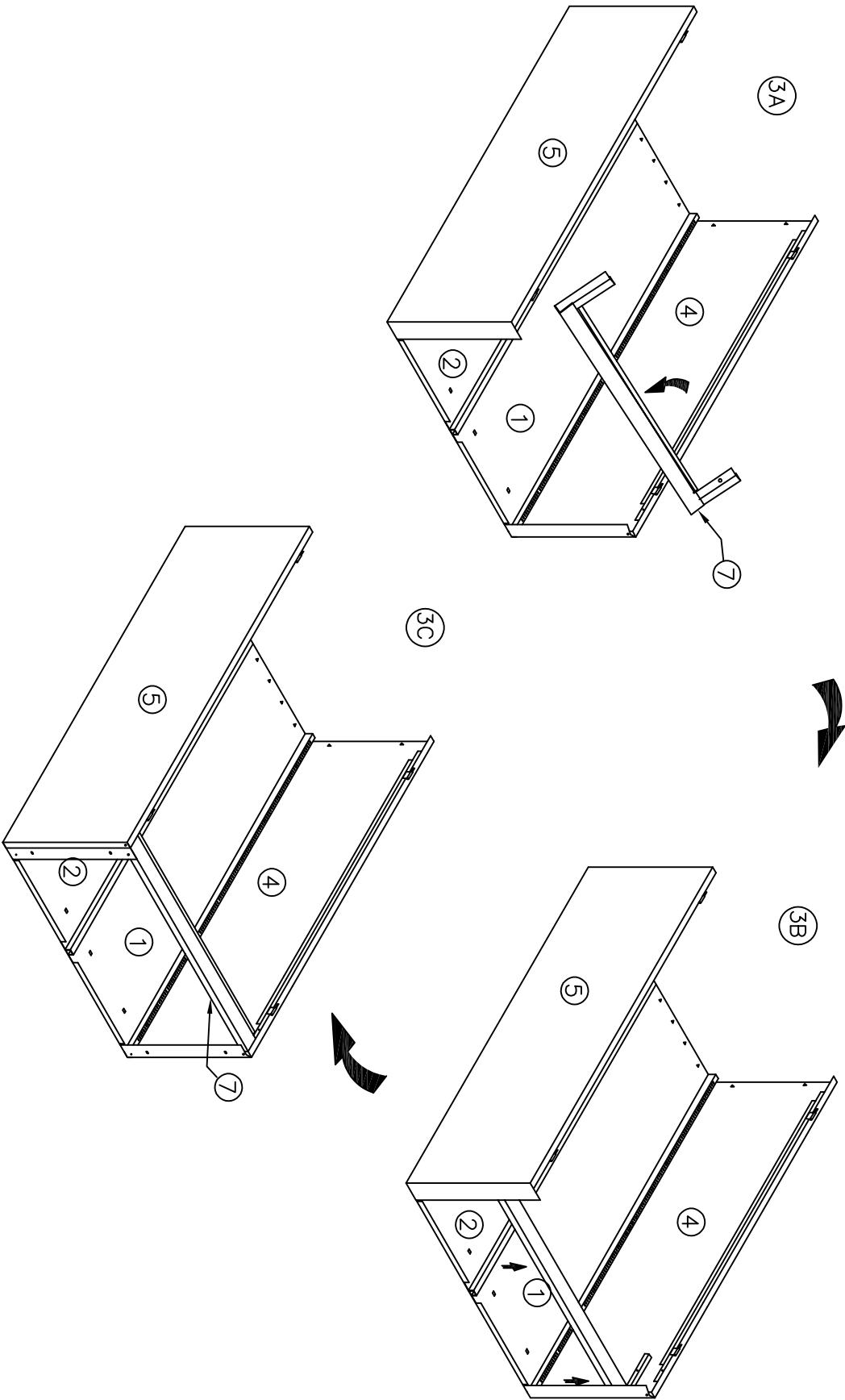
STEP : 1 – BACK LH & RH ASSEMBLY



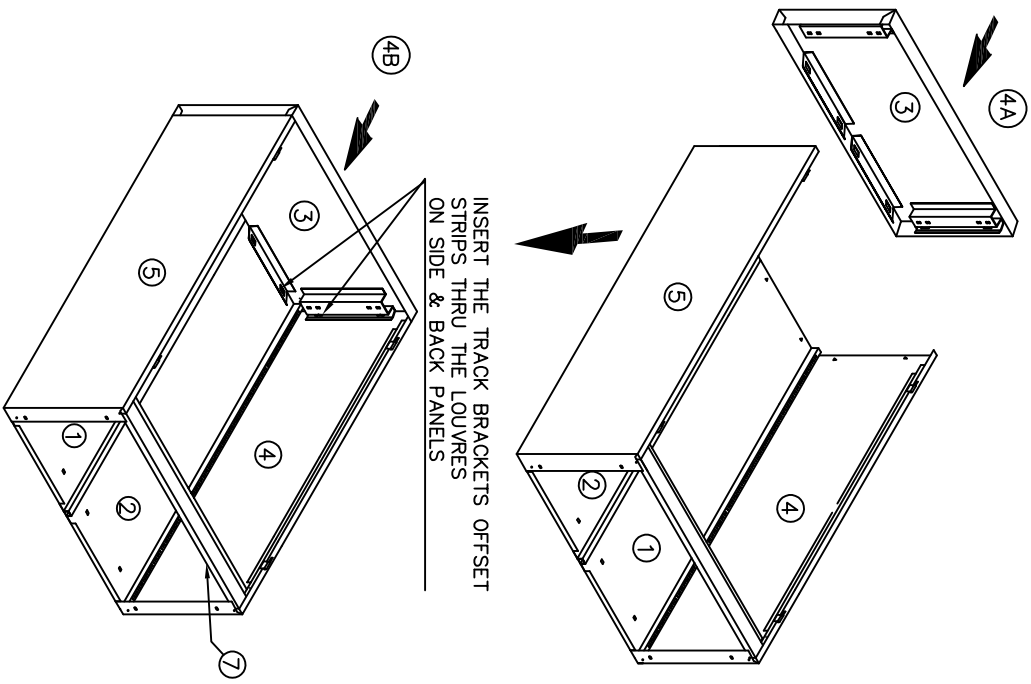
STEP : 2 – SIDE LH&RH AND BACK LH & RH ASSEMBLY



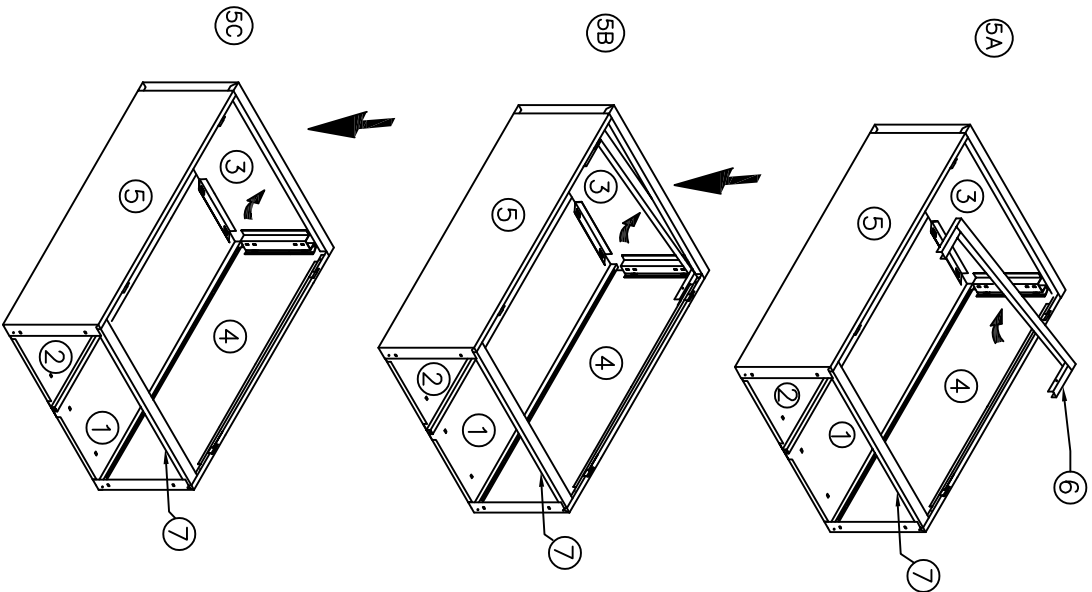
STEP : 3 – FIXING OF BOTTOM STIFF ASSEMBLY



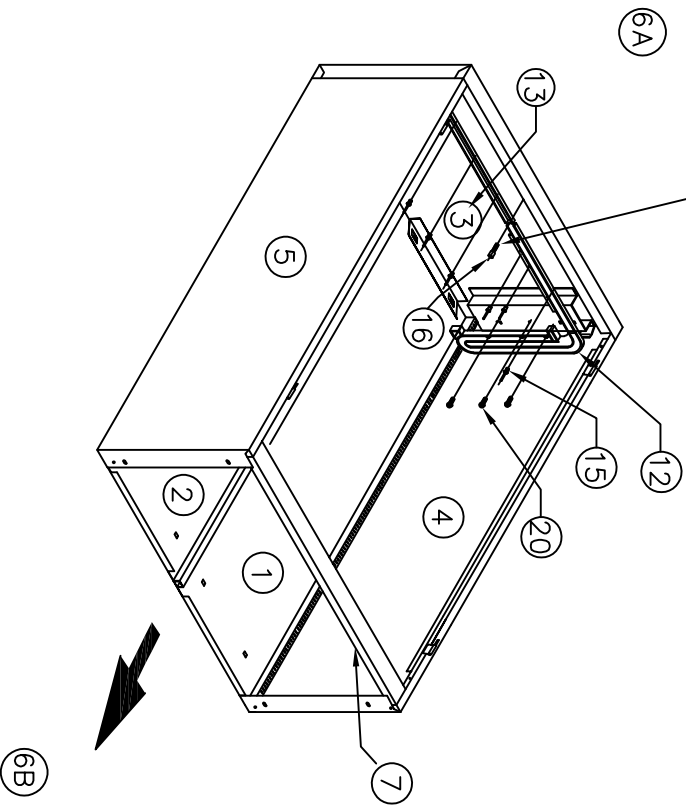
STEP : 4 – FIXING OF TOP PANEL ASSY



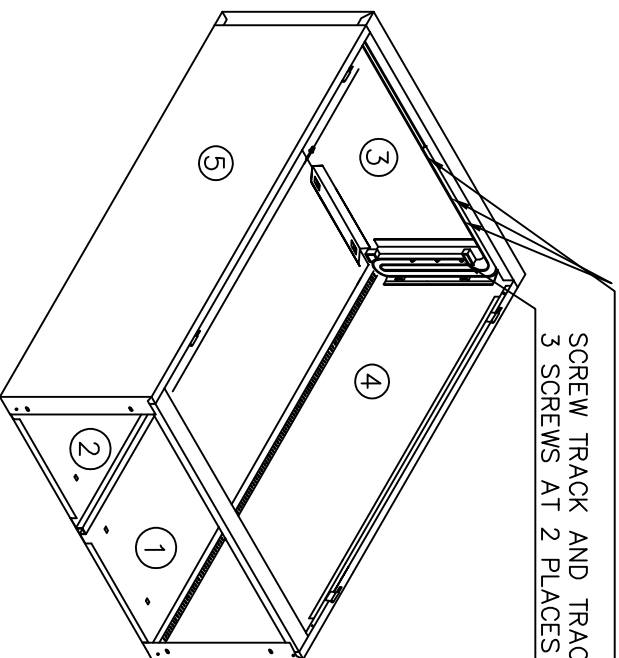
STEP : 5 – FIXING OF TOP STIFF ASSY



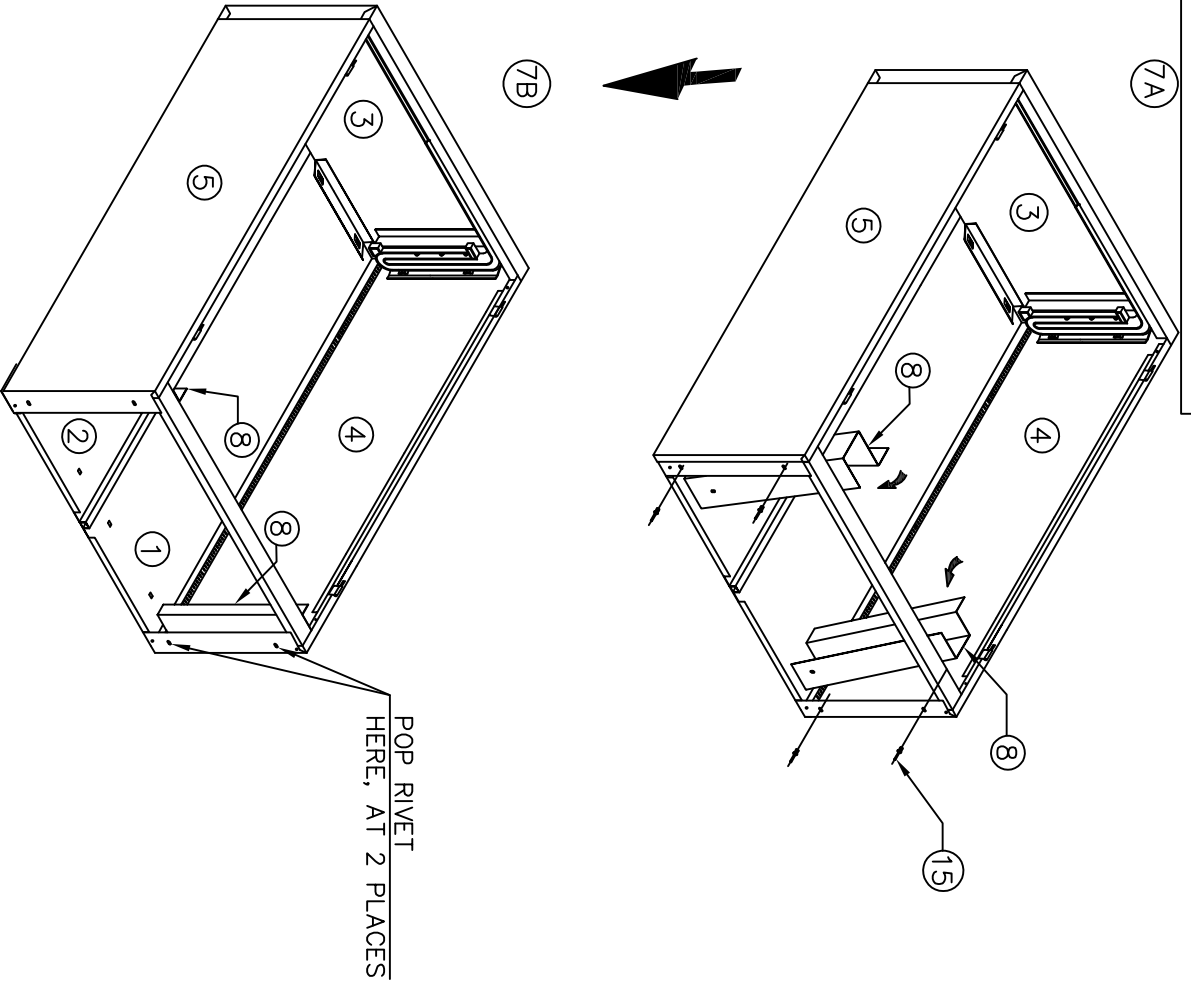
FIRST LOOSE FIX THE DOOR STOPPER SCREW FOR SEPARATING LH & RH TRACK BY 4 MM. ONCE TRACK IS POP-RIVETED REMOVE THE SCREW.



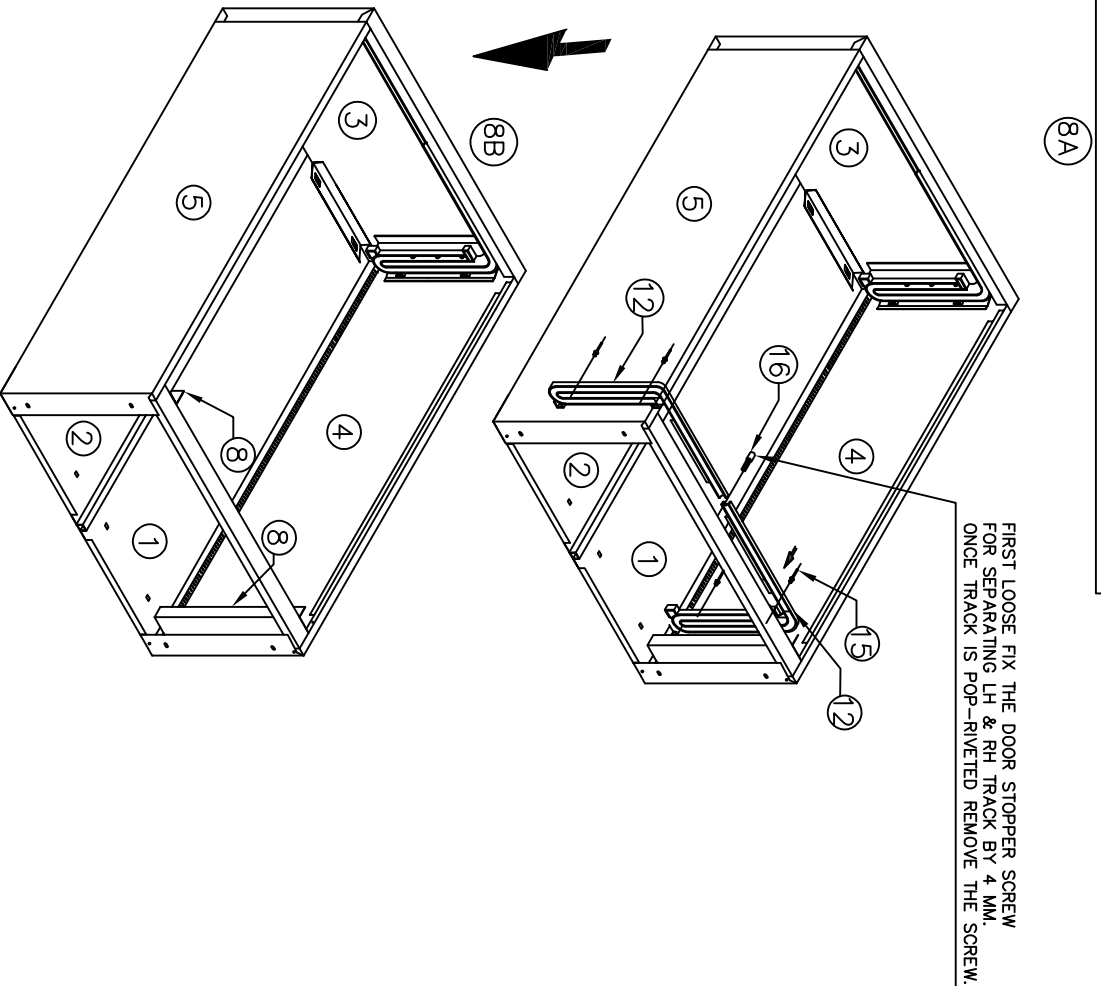
POP RIVET TRACK WITH TRACK BKT HERE
 3 POP RIVETS AT 2 PLACES
 SCREW TRACK AND TRACK BKT WITH M4 SCREWS
 3 SCREWS AT 2 PLACES



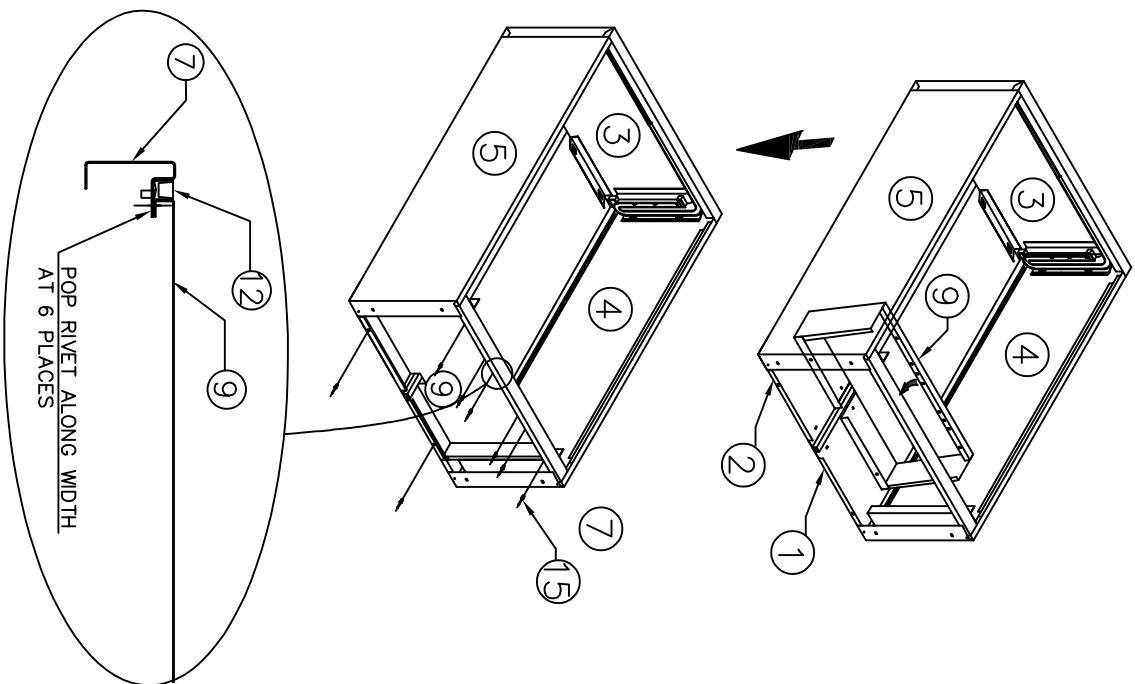
STEP : 7 – FIXING OF BOTTOM TRACK BKT



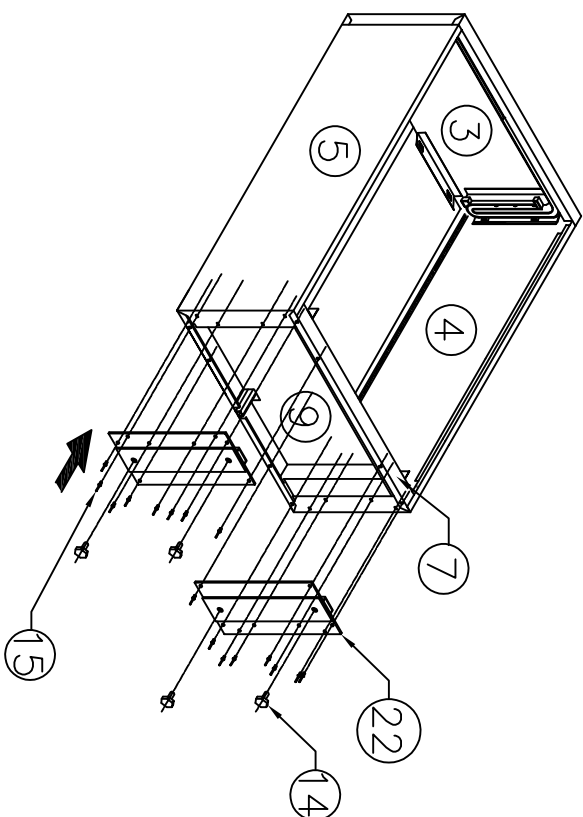
STEP : 8 – FIXING OF TRACK on BOTTOM BKT



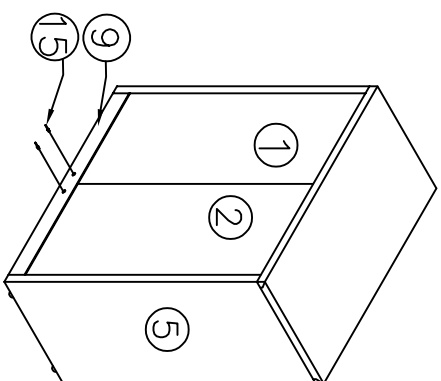
STEP : 9 – FIXING OF BOTTOM PANEL



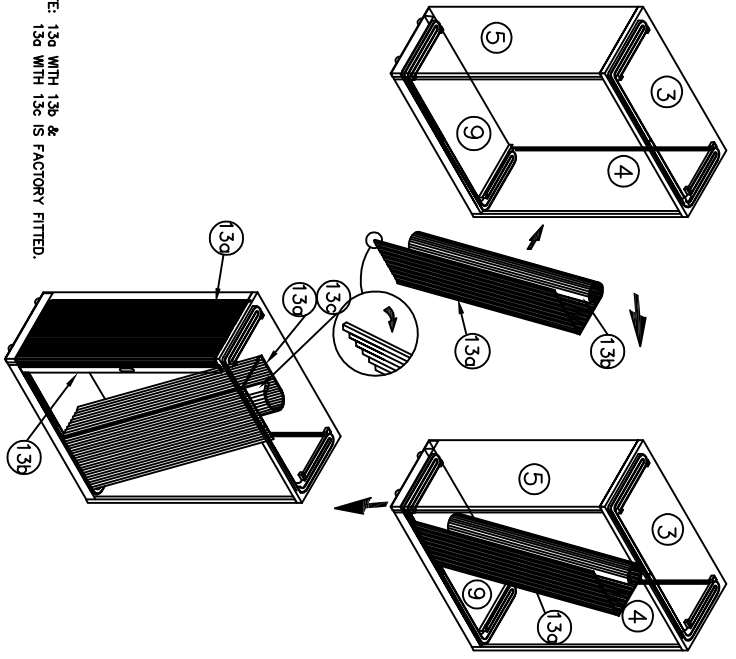
STEP : 10 – LEVELER FIXING BRACKET



STEP:11-POP-RIVETING OF BOTTOM PANEL FROM BACK OF UNIT.

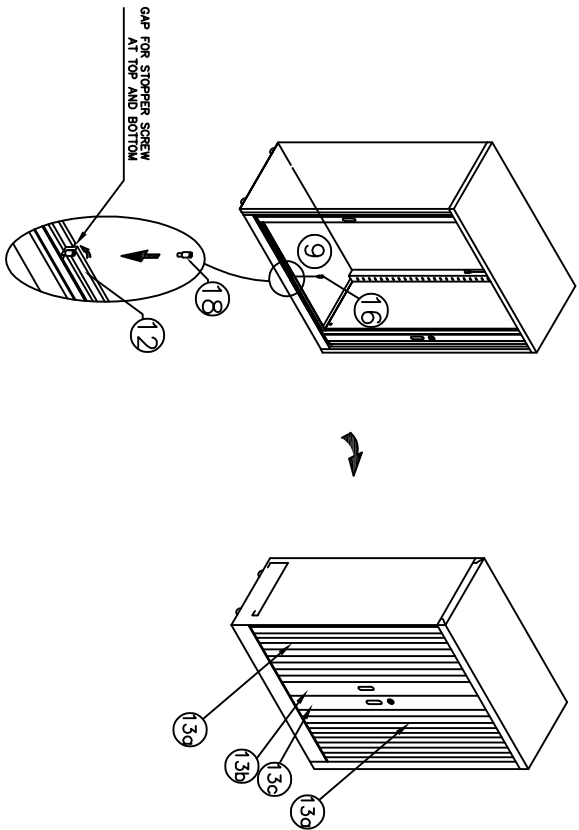


STEP : 12 – SHUTTER ASSY.



NOTE: 13b WITH 13c & 13c WITH 13b IS FACTORY FITTED.

STEP : 14 – STOPPER SCREW FIXING



STEP : 13 – FALSE SIDE PANEL ASSEMBLY

