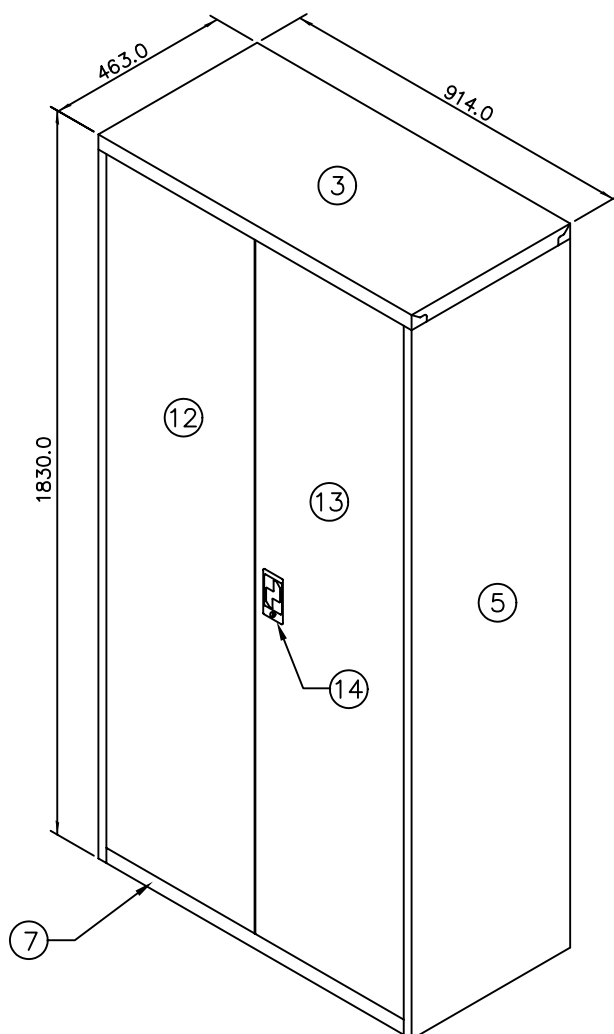


ASSEMBLY INSTRUCTIONS FOR FASTENER FREE CUPBOARD

* PLEASE STUDY THE ASSEMBLY INSTRUCTIONS CAREFULLY & FAMILIARISE YOURSELF WITH THE PARTS BEFORE ASSEMBLY.

* TOOLS REQUIRED : SOFT HAMMER, SCREW DRIVER.

* ENSURE THAT ALL THE ITEMS LISTED IN PARTS LIST ARE PRESENT BEFORE ASSEMBLY.

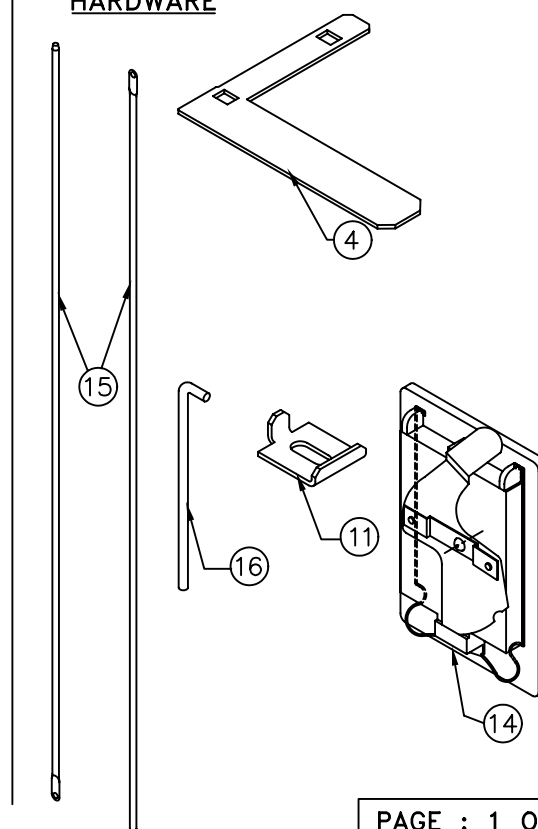


FHC3

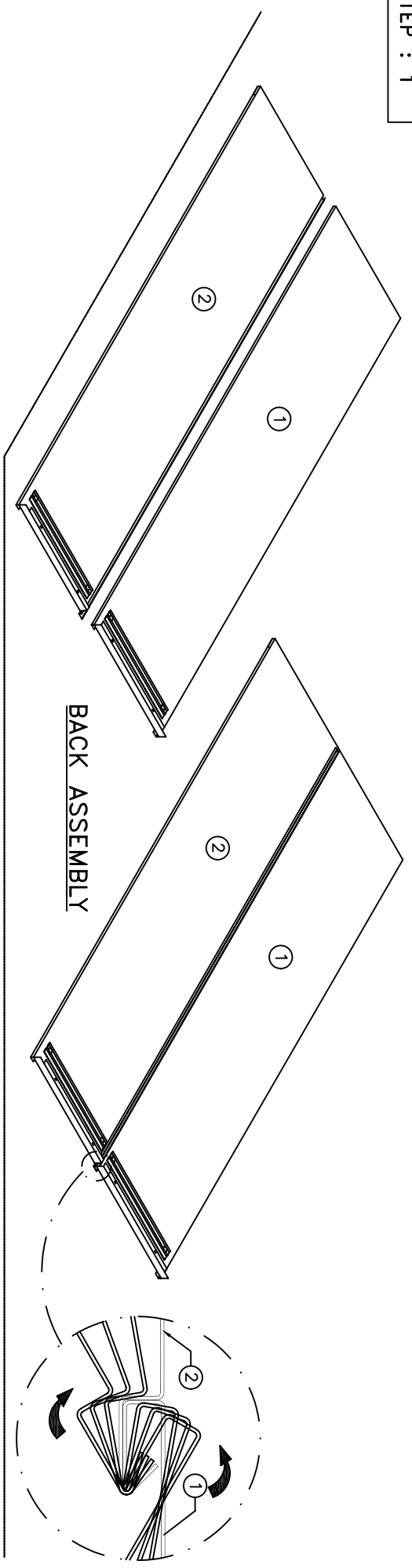
PARTS LIST

PART NO.	DESCRIPTION	QTY. FHC3	QTY. HHC1
1.	R.H. BACK PANEL	1	1
2.	L.H. BACK PANEL	1	1
3.	TOP PANEL	1	1
4.	CORNER STRENGTHENING PIECE	2	2
5.	R.H. SIDE PANEL	1	1
6.	L.H. SIDE PANEL	1	1
7.	FRONT FRAME ASSEMBLY	1	1
8.	BACK FRAME ASSEMBLY	1	1
9.	BOTTOM PANEL	1	1
10.	SHELF	3	1
11.	SHELF SUPPORT BRACKET	15	5
12.	L.H. DOOR	1	1
13.	R.H. DOOR	1	1
14.	FLUSH HANDLE 3-WAY LOCK	1	1
15.	SHOOTING BOLT	2	2
16.	HINGE PIN	6	6

HARDWARE

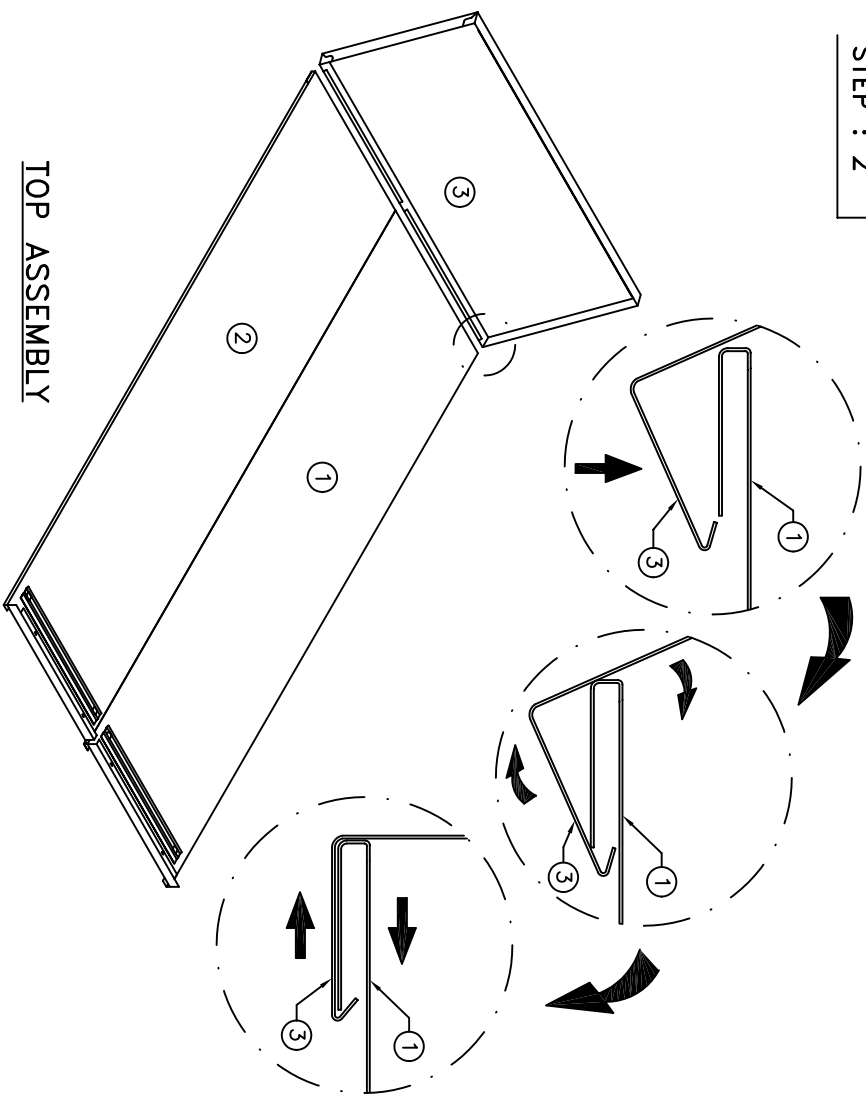


STEP : 1



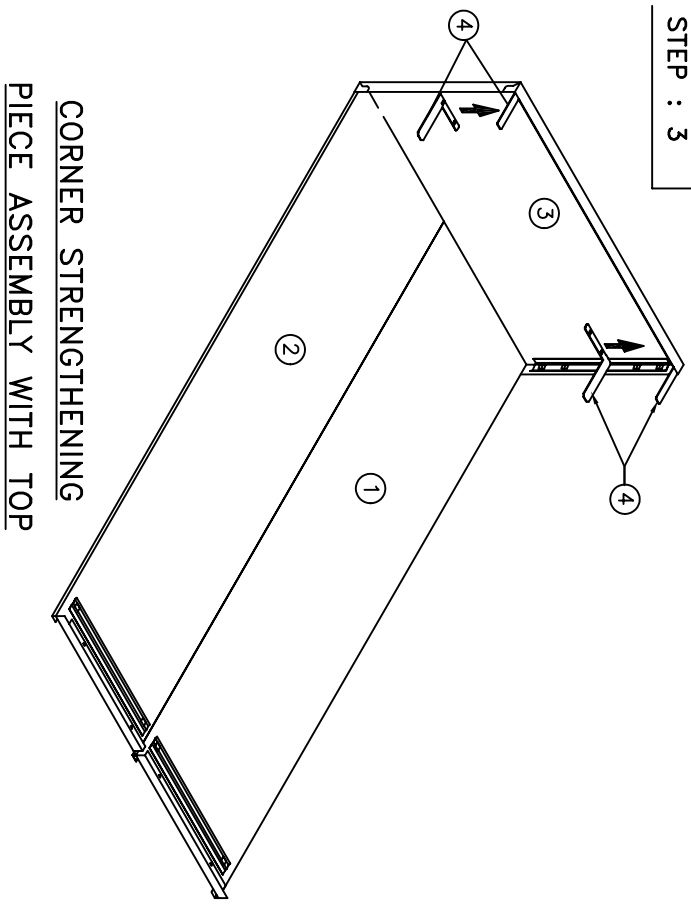
BACK ASSEMBLY

STEP : 2



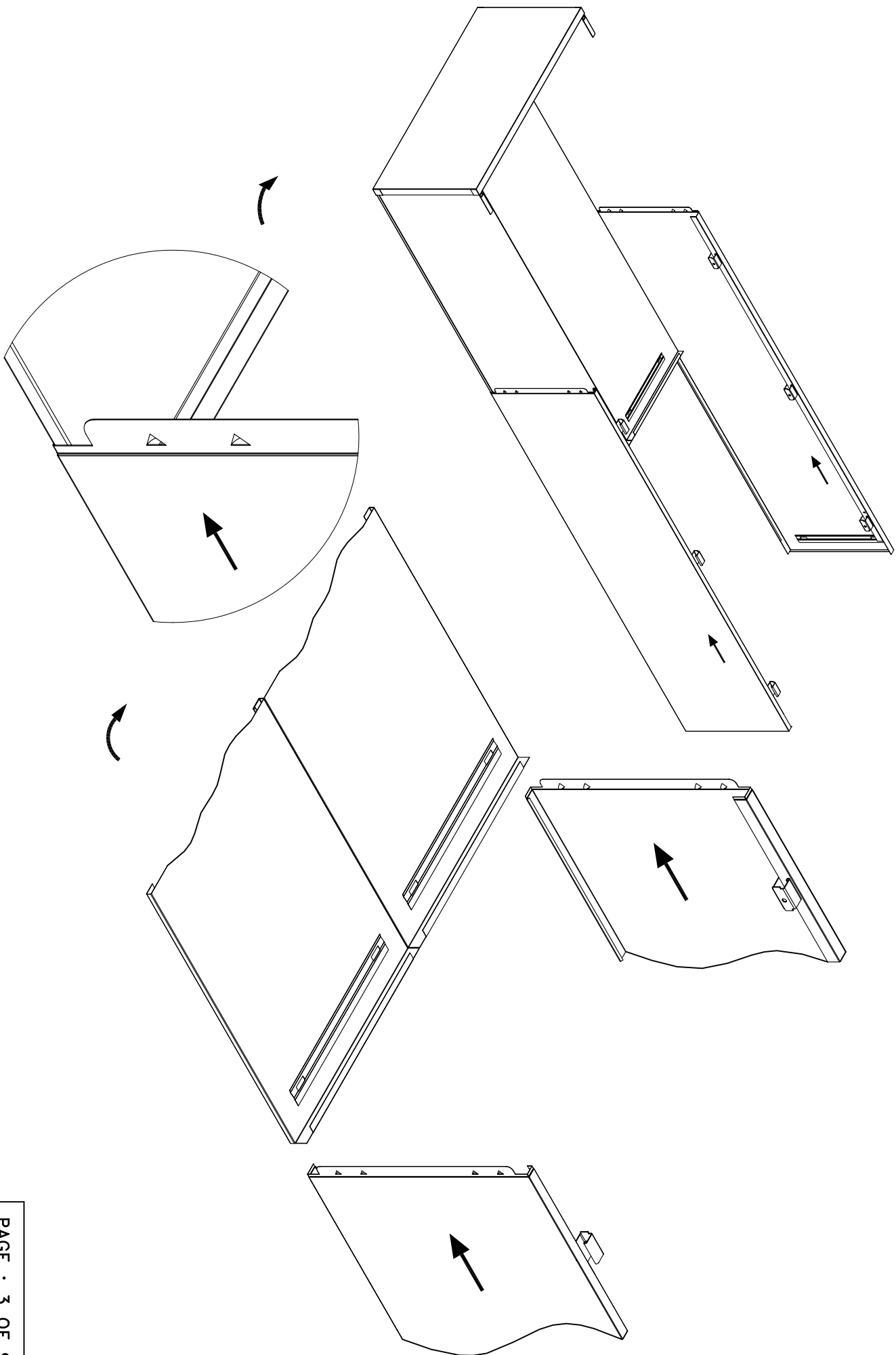
TOP ASSEMBLY

STEP : 3

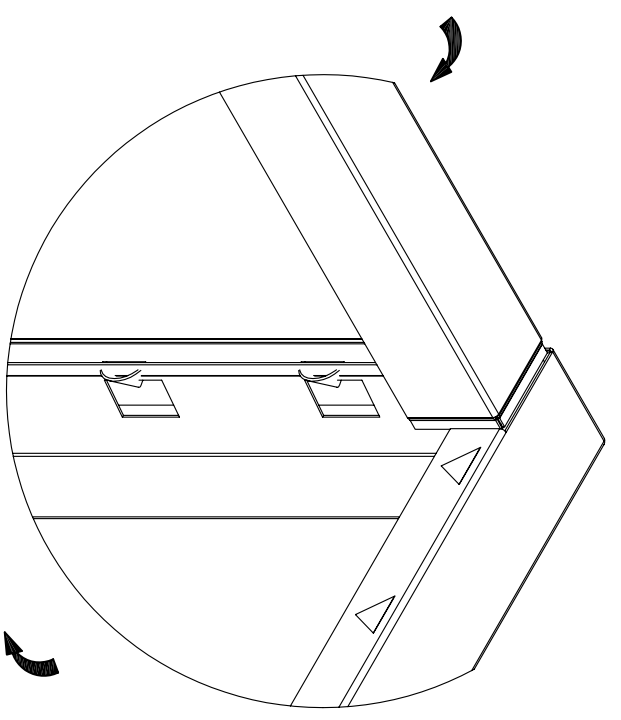
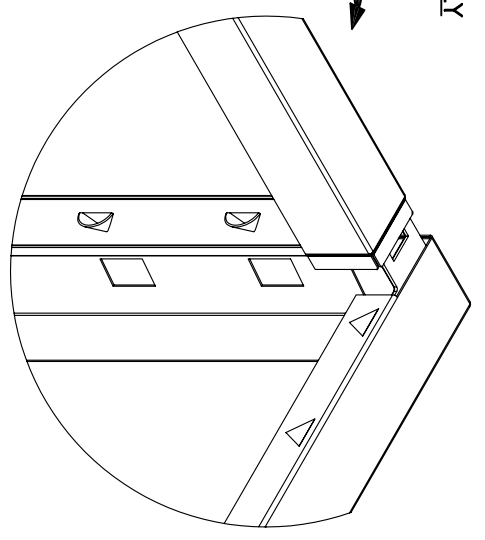
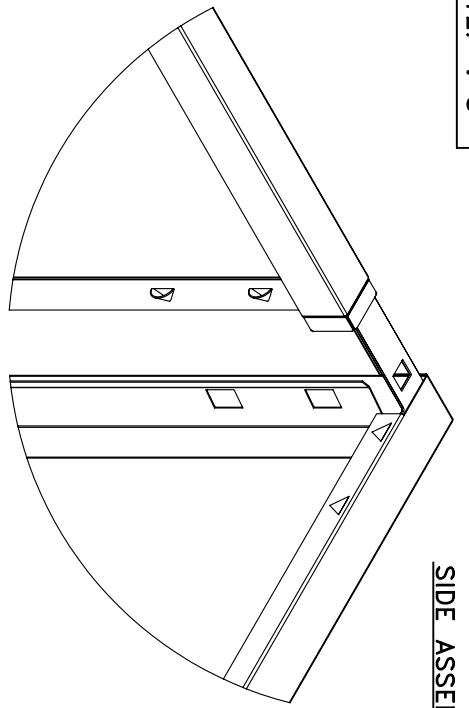


CORNER STRENGTHENING
PIECE ASSEMBLY WITH TOP

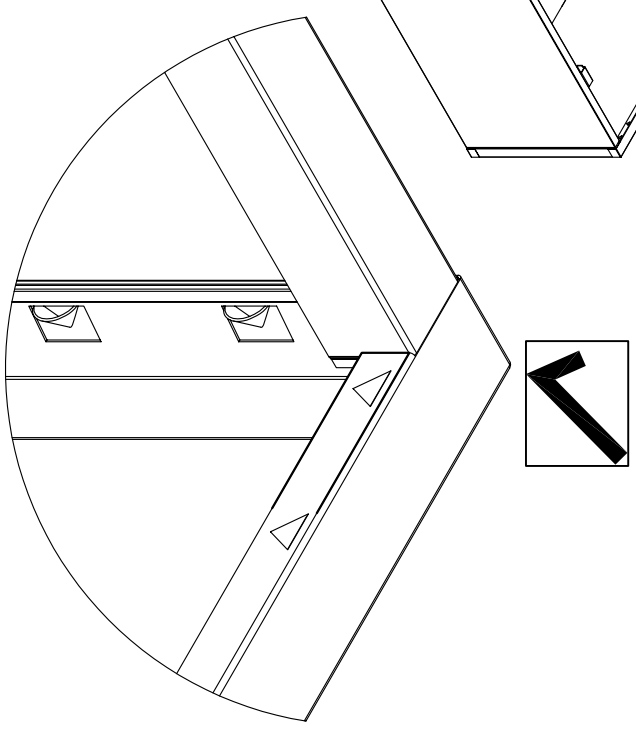
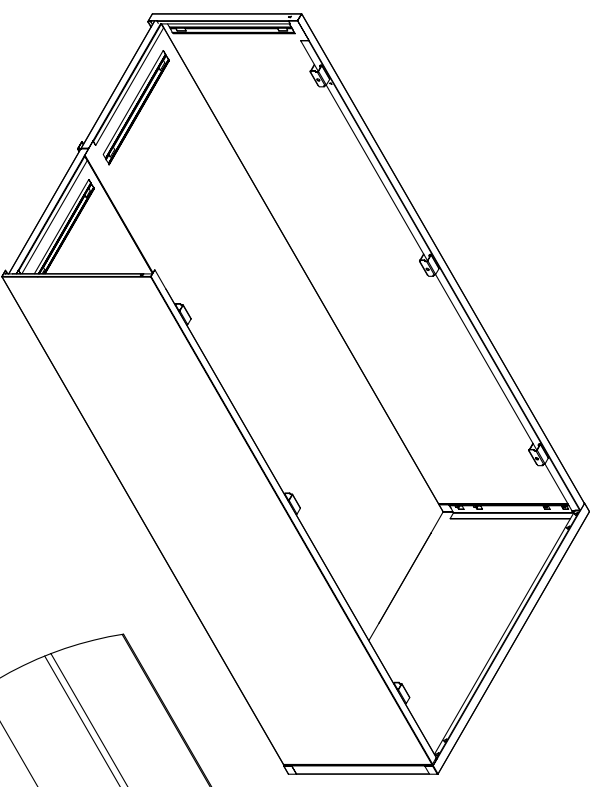
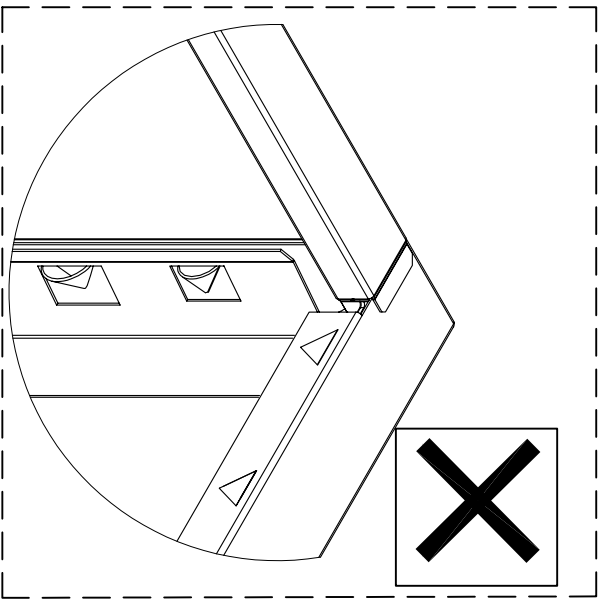
SIDE ASSEMBLY



SIDE ASSEMBLY

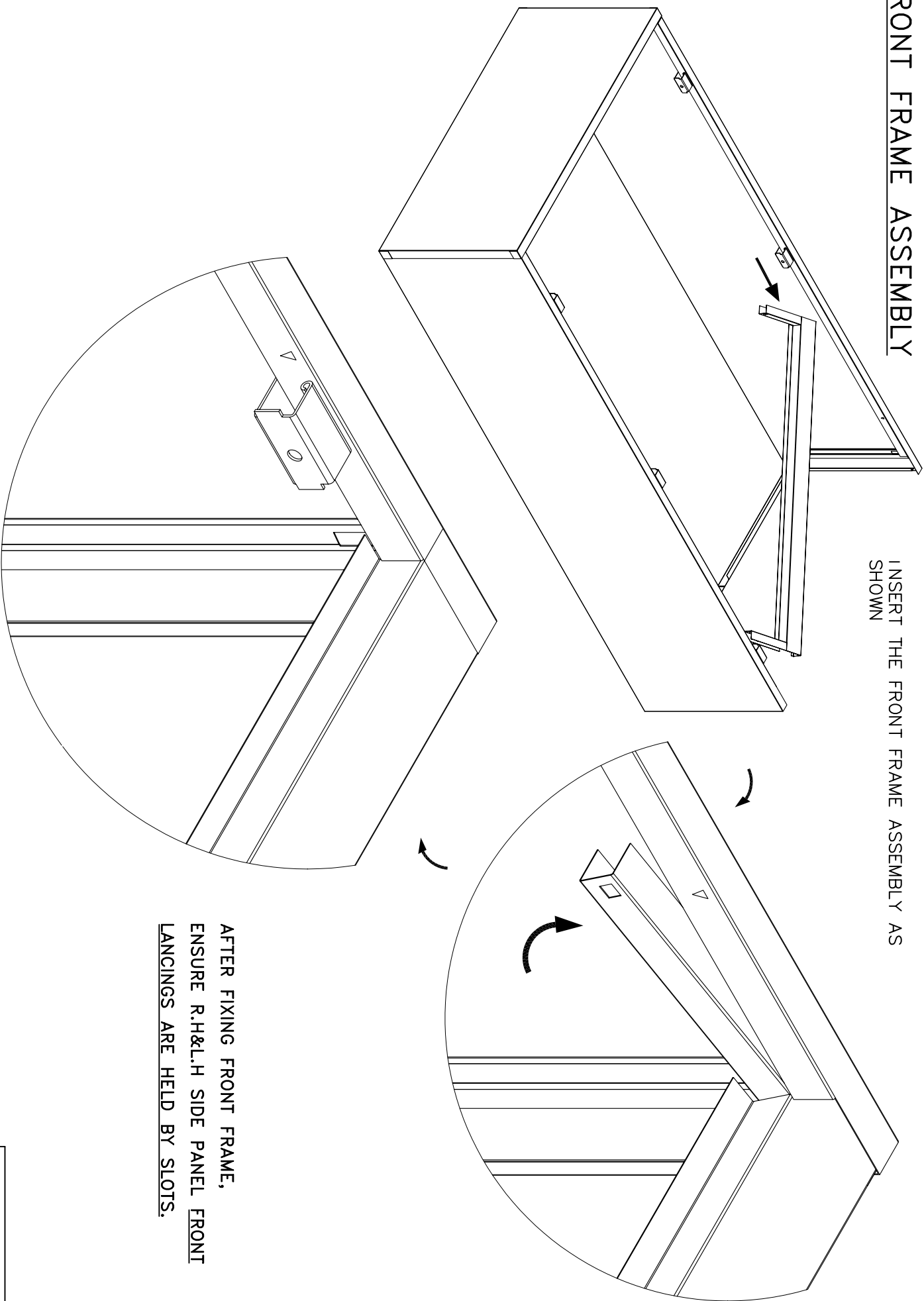


BEFORE SIDE PANEL RH&LH LANCINGS ARE SNAPPED ON WITH TOP PANEL RETAINER STRIP, ENSURE SIDE PANEL FRONT&BACK NOTCHED EDGES ARE COVERED BY TOP PANEL.



FRONT FRAME ASSEMBLY

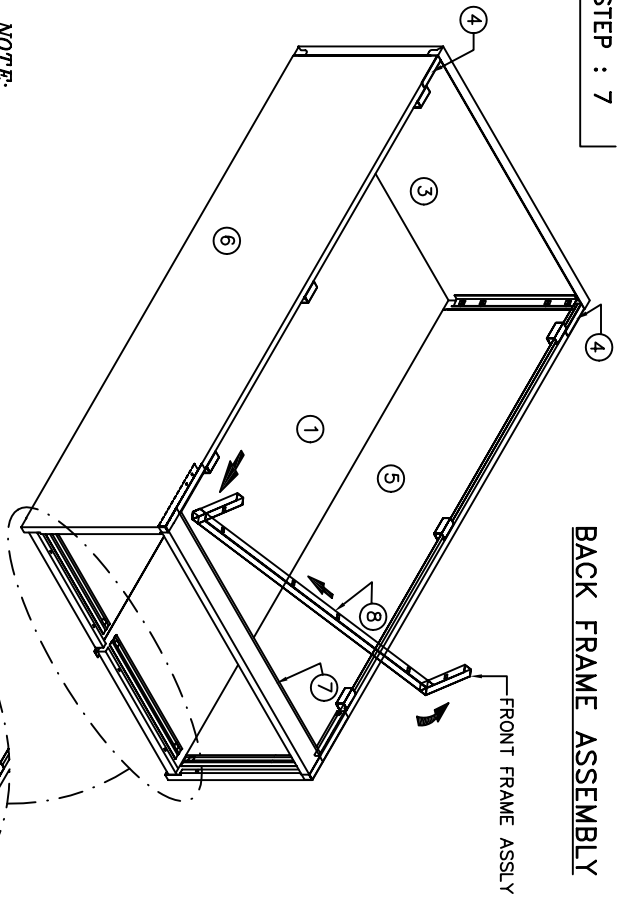
INSERT THE FRONT FRAME ASSEMBLY AS SHOWN



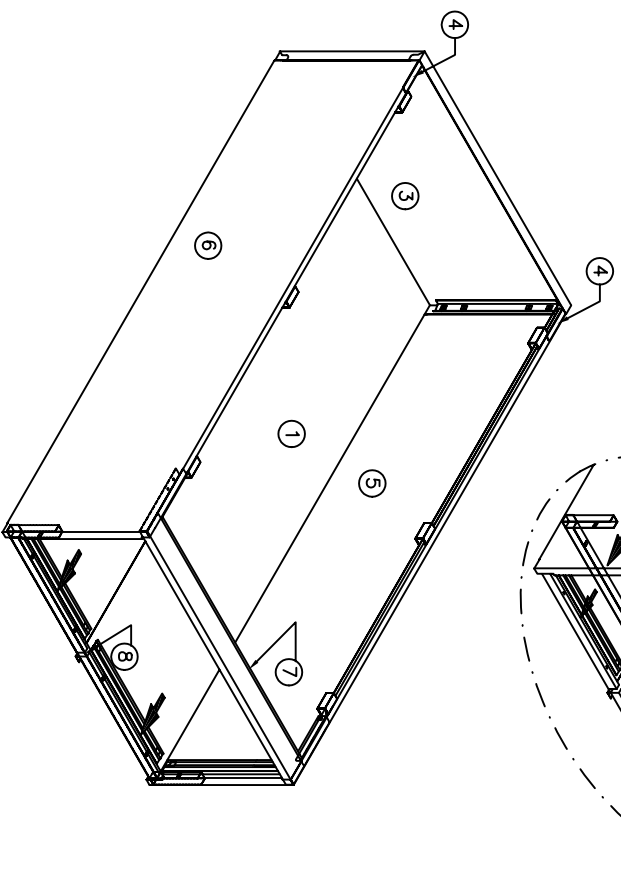
AFTER FIXING FRONT FRAME,
ENSURE R.H&L.H SIDE PANEL FRONT
LANCINGS ARE HELD BY SLOTS.

STEP : 7

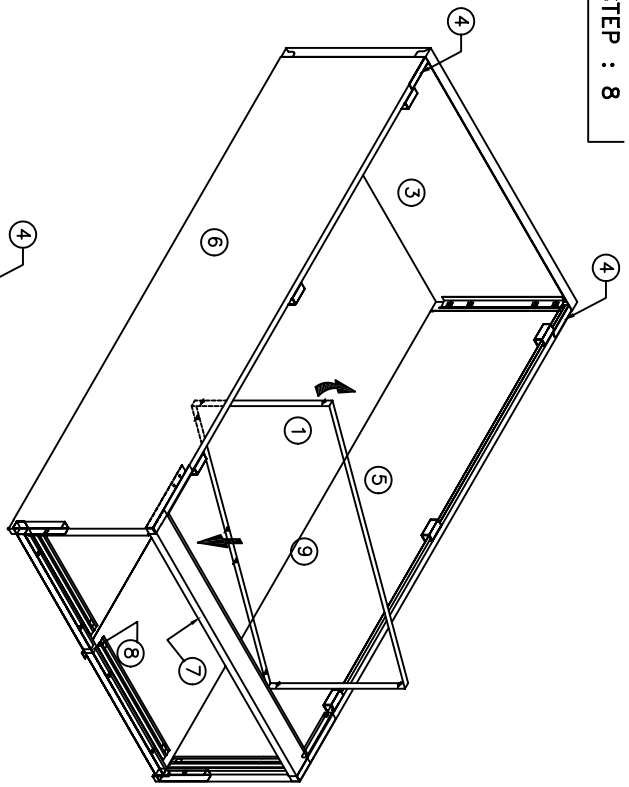
BACK FRAME ASSEMBLY



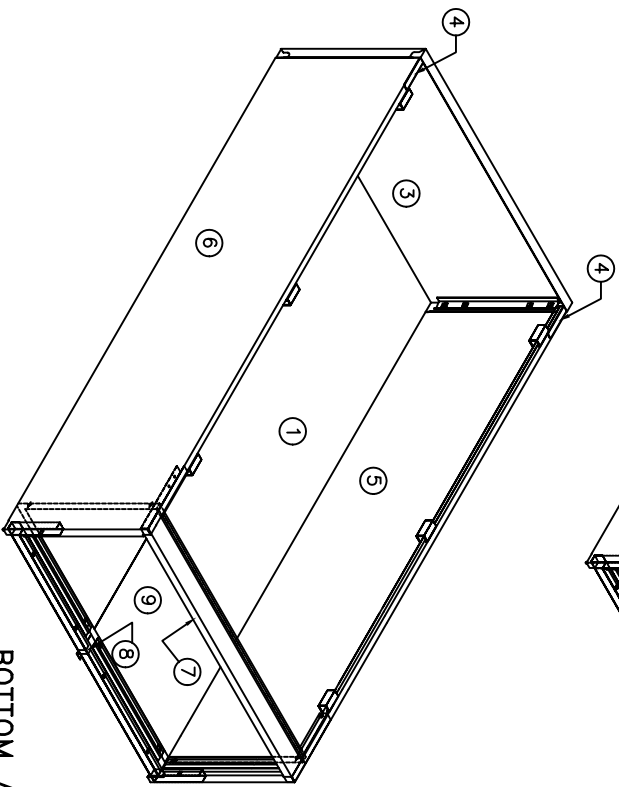
NOTE:
 AFTER FIXING BACK FRAME,
 ENSURE R.H.&L.H SIDE PANEL AND
 R.H.&L.H BACK PANEL BOTTOM REAR
 LANCINGS ARE HELD BY SLOTS.

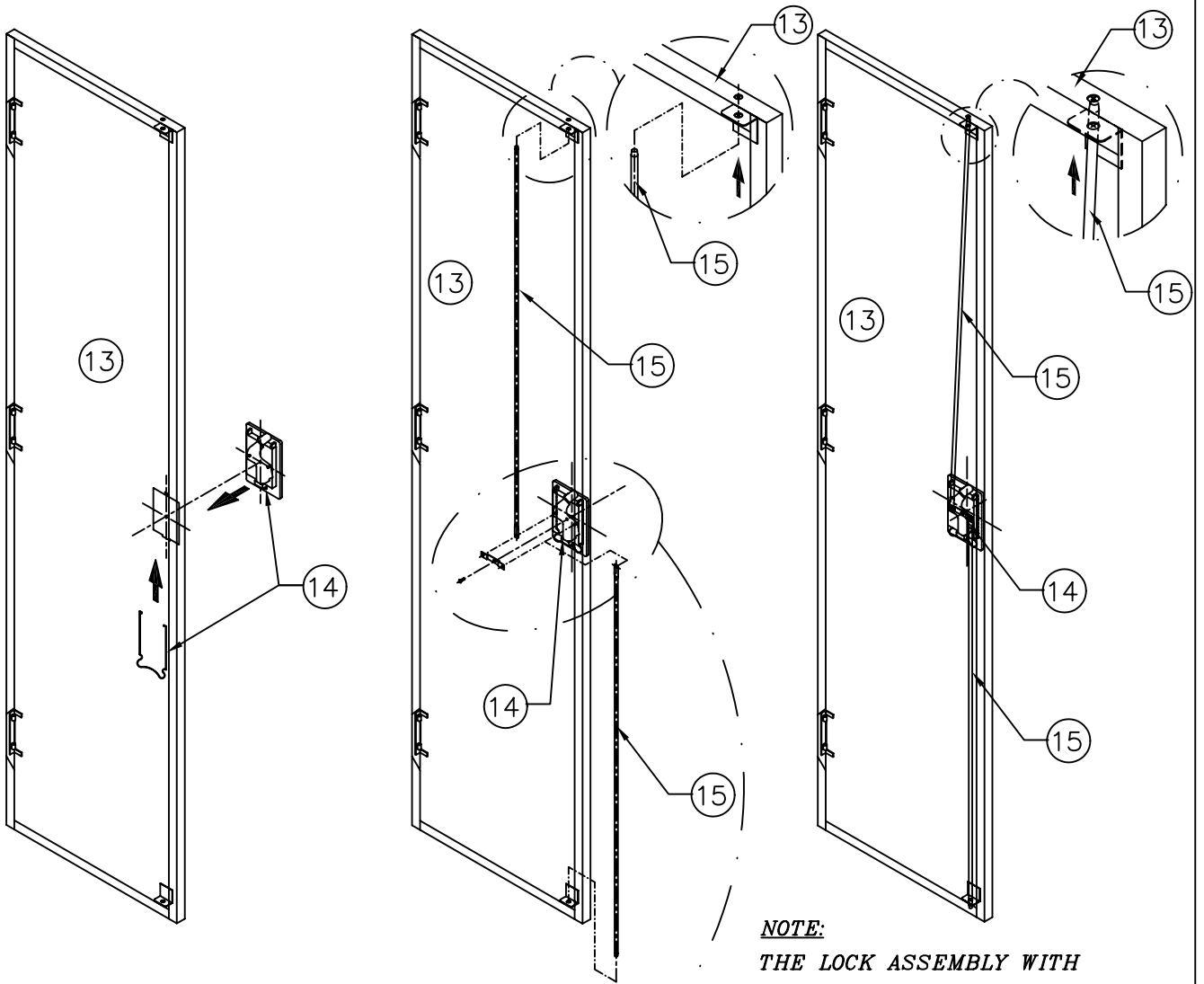


STEP : 8

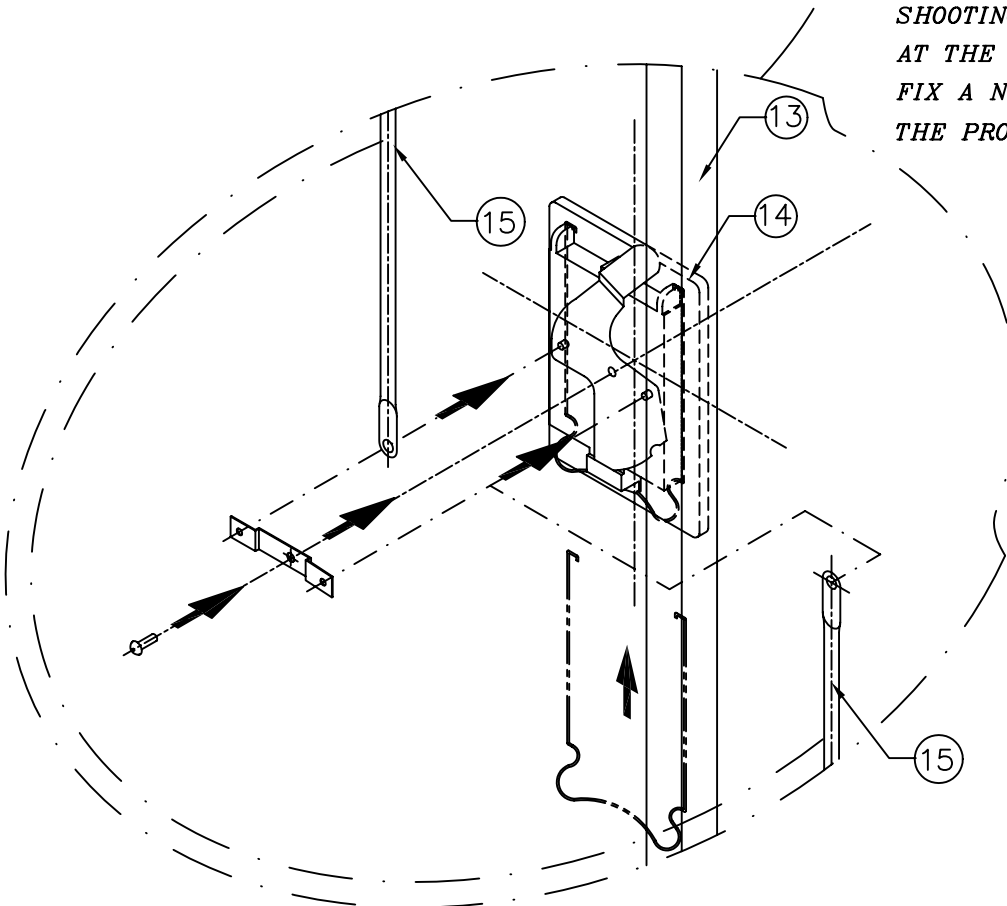


BOTTOM ASSEMBLY

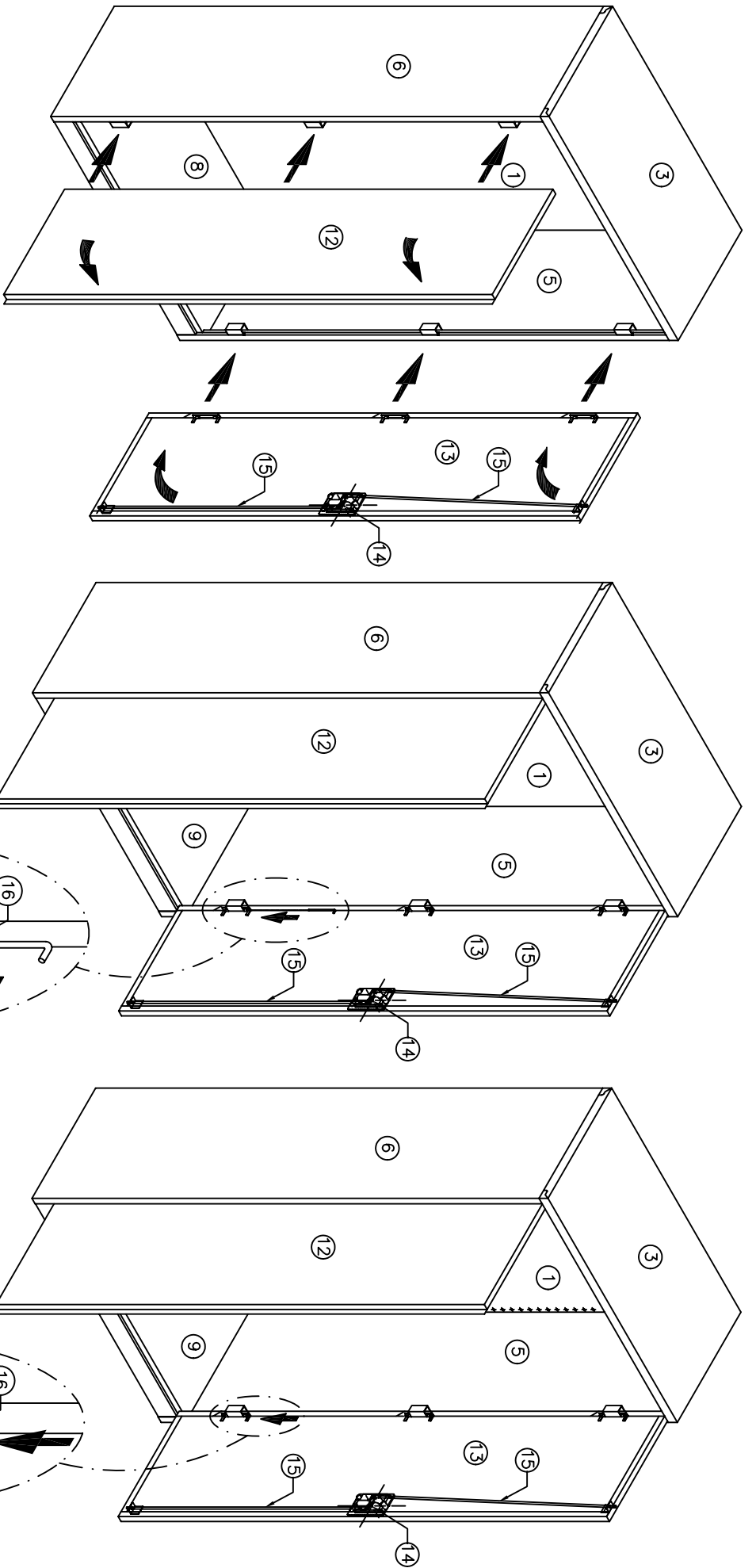




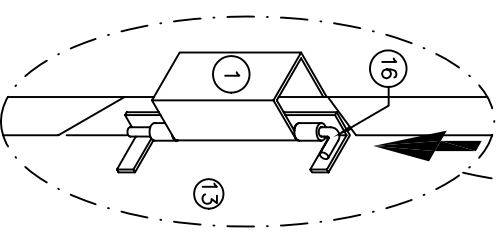
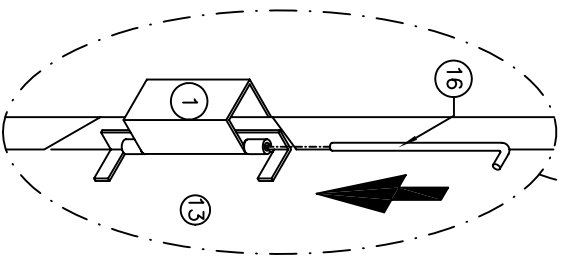
NOTE:
THE LOCK ASSEMBLY WITH SHOOTING BOLTS, IS PREFIXED AT THE FACTORY. IN ORDER TO FIX A NEW LOCK, PLEASE ADOPT THE PROCEDURE SHOWN IN STEP:8.

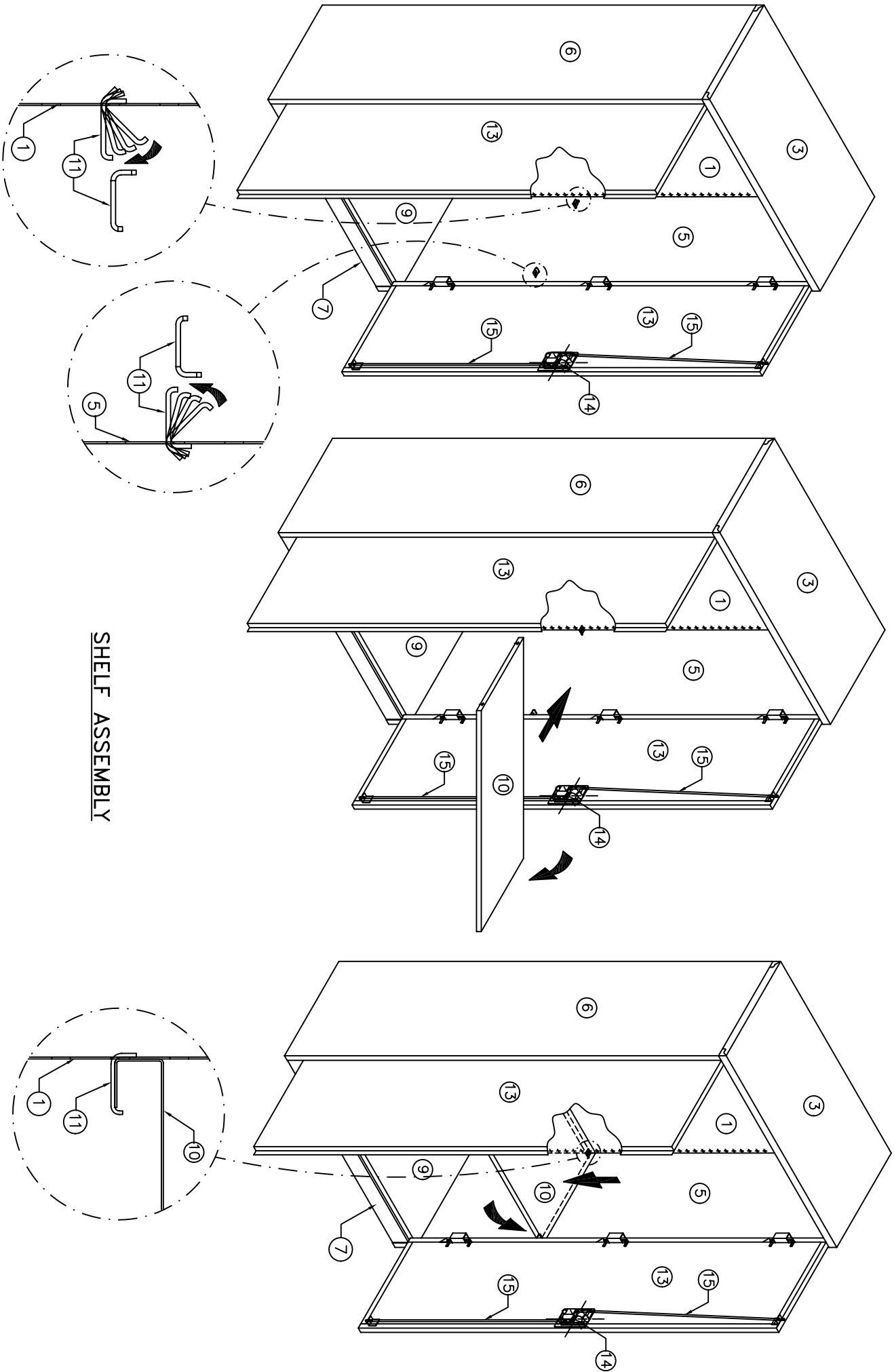


**R.H. DOOR
LOCK ASSEMBLY**



DOOR ASSEMBLY WITH CABINET





SHELF ASSEMBLY